

**Lower Thames Crossing
6.2 Environmental Statement
Figure 7.19 - Photomontages
Winter Year 1 and Summer
Year 15 (1 of 4)
(Clean version)**

APFP Regulation 5(2)(a)

Infrastructure Planning (Applications:
Prescribed Forms and Procedure)
Regulations 2009

Volume 6

**DATE: October 2023
DEADLINE: 6**

Planning Inspectorate Scheme Ref: TR010032
Application Document Ref: TR010032/APP/6.2

VERSION: 4.0

Revision History

Version	Date	Submitted at
1.0	31 October 2022	DCO Application
2.0	24 August 2023	Deadline 3
3.0	03 October 2023	Deadline 5
4.0	31 October 2023	Deadline 6

Lower Thames Crossing

6.2 Environmental Statement

Figure 7.19 - Photomontages Winter Year 1 and Summer Year 15 (1 of 4) (Clean version)

List of contents

	Page number
1 Photomontages	1
1.1 Introduction	1
1.2 Schedule of Representative Viewpoints included in this application document	1

1 Photomontages

1.1 Introduction

- 1.1.1 For each Representative Viewpoint, the following photography and photomontage views have been provided:
- a. Baseline photography – Winter
 - b. Corresponding photomontage – Year 1 (opening year)
 - c. Baseline photography – Summer
 - d. Corresponding photomontage – Year 15 (design year)

1.2 Schedule of Representative Viewpoints included in this application document

- 1.1.2 Baseline photography and photomontages have been included for the following Representative Viewpoints within this part of Figure 7.19:

Part One of Figure 7.19: South of the River Thames

- a. S-03 - View from the Kent Downs AONB on footpath NS161, north of Park Pale, east of Shorne Woods Country Park
- b. S-05a - View from the Kent Downs AONB on Park Pale overbridge
- c. S-11 - View from the Kent Downs AONB on footpath NS179 within Cobham Hall Grade II* Registered Park and Garden
- d. S-12 - View from the Kent Downs AONB on Brewers Road
- e. S-13 - View from the Kent Downs AONB on Brewers Road overbridge
- f. S-14 - View from the Kent Downs AONB on Brewers Road overbridge
- g. S-17 - View from the Kent Downs AONB on Thong Lane
- h. S-18 - View from the Kent Downs AONB on the HS1 green bridge
- i. S-20a - View from Jeskyns Community Woodland
- j. S-22 - View from Watling Street on the A2 overbridge



P01	S9	20/09/2023	Deadline 5	BB	SK	BF
Rev	Status	Rev. Date	Purpose of revision	Drawn	Chck'd	Apprv'd

For location see Figure 7.16 - Visual Effects Drawing with Representative Viewpoint and Photomontage Locations		Winter Viewpoint: Date and Time:	S-03 05/03/2019 11:54	Camera: Lens: Equipment:	Canon EOS 6D MkII Canon EF 50mm f/1.8 STM Manfrotto MA 454 Micro Positioning Plate Manfrotto SBH-100 Ball Head	Visualisation Type: Projection Type: Enlargement Factor: Horizontal FOV:	Type 3 Cylindrical 1.5 56.5°	FL, Max Aperture: Tripod Height: Viewpoint Ground Height: Viewpoint Grid Reference:	50mm, 1.75 1.5m 86.7m AOD 569530E, 169900N	Distance to Order Limits: View Direction (Centre of View): GPS Accuracy:	0m SSE 5m
--	--	--	--------------------------	---------------------------------------	---	--	---------------------------------------	---	---	--	-----------------



LOWER THAMES CROSSING
5th Floor Beaufort House
15 St Botolph Street
London EC3A 7DT

Project LOWER THAMES CROSSING
Drawing title Figure 7.19
Baseline Photography - Viewpoint S-03
Winter Year 1
Sheet 1 of 4

Drawn	BB	Date	20/09/2023	Status	S9	Revision	P01
Checked	SK	Date	20/09/2023	Application Document No. TR010032/APP/6.2			
Approved	BF	Date	20/09/2023	Drawing number HE540039-CJV-ELS-SZP_ZZ000000_Z-DR-LV-00325A			



P01	S9	20/09/2023	Deadline 5	BB	SK	BF
Rev	Status	Rev. Date	Purpose of revision	Drawn	Chck'd	Apprv'd

For location see Figure 7.16 - Visual Effects Drawing with Representative Viewpoint and Photomontage Locations		Winter Viewpoint: Date and Time:	S-03 05/03/2019 11:54	Camera: Lens: Equipment:	Canon EOS 6D MkII Canon EF 50mm f/1.8 STM Manfrotto MA 454 Micro Positioning Plate Manfrotto SBH-100 Ball Head	Visualisation Type: Projection Type: Enlargement Factor: Horizontal FOV:	Type 3 Cylindrical 1.5 56.5°	FL, Max Aperture: Tripod Height: Viewpoint Ground Height: Viewpoint Grid Reference:	50mm, 1.75 1.5m 86.7m AOD 569530E, 169900N	Distance to Order Limits: View Direction (Centre of View): GPS Accuracy:	0m SSE 5m
--	--	--	--------------------------	---------------------------------------	---	--	---------------------------------------	---	---	--	-----------------



LOWER THAMES CROSSING
5th Floor Beaufort House
15 St Botolph Street
London EC3A 7DT

Project	LOWER THAMES CROSSING
Drawing title	Figure 7.19 Photomontage - Viewpoint S-03 Winter Year 1 Sheet 1 of 4

Drawn	BB	Date	20/09/2023	Status	S9	Revision	P01
Checked	SK	Date	20/09/2023	Application Document No. TR010032/APP/6.2			
Approved	BF	Date	20/09/2023	Drawing number HE540039-CJV-ELS-SZP_ZZ000000_Z-DR-LV-00325			



P01	S9	20/09/2023	Deadline 5	BB	SK	BF
Rev	Status	Rev. Date	Purpose of revision	Drawn	Chck'd	Apprv'd

For location see Figure 7.16 - Visual Effects Drawing with Representative Viewpoint and Photomontage Locations

Winter Viewpoint:	S-03	Date and Time:	05/03/2019 11:54
Camera:	Canon EOS 6D MkII	Visualisation Type:	Type 3
Lens:	Canon EF 50mm f/1.8 STM	Projection Type:	Cylindrical
Equipment:	Manfrotto MA 454 Micro Positioning Plate	Enlargement Factor:	1.5
	Manfrotto SBH-100 Ball Head	Horizontal FOV:	56.5°
FL, Max Aperture:	50mm, 1.75	Distance to Order Limits:	0m
Tripod Height:	1.5m	View Direction (Centre of View):	SSE
Viewpoint Ground Height:	86.7m AOD	GPS Accuracy:	5m
Viewpoint Grid Reference:	569530E, 169900N		



Client
LOWER THAMES CROSSING
 5th Floor Beaufort House
 15 St Botolph Street
 London EC3A 7DT

Project
 LOWER THAMES CROSSING
Drawing title
 Figure 7.19
 Baseline Photography - Viewpoint S-03
 Winter Year 1
 Sheet 2 of 4

Drawn	BB	Date - 20/09/2023	Status	S9	Revision	P01
Checked	SK	Date - 20/09/2023	Application Document No. TR010032/APP/6.2			
Approved	BF	Date - 20/09/2023	Drawing number			
HE540039-CJV-ELS-SZP_ZZ000000_Z-DR-LV-00326A						



P01	S9	20/09/2023	Deadline 5	BB	SK	BF
Rev	Status	Rev. Date	Purpose of revision	Drawn	Chck'd	Apprv'd

For location see Figure 7.16 - Visual Effects Drawing with Representative Viewpoint and Photomontage Locations		Winter Viewpoint:	S-03				
		Date and Time:	05/03/2019 11:54				
Camera:	Canon EOS 6D MkII	Visualisation Type:	Type 3	FL, Max Aperture:	50mm, 1.75	Distance to Order Limits:	0m
Lens:	Canon EF 50mm f/1.8 STM	Projection Type:	Cylindrical	Tripod Height:	1.5m	View Direction	(Centre of View): SSE
Equipment:	Manfrotto MA 454 Micro Positioning Plate	Enlargement Factor:	1.5	Viewpoint Ground Height:	86.7m AOD	GPS Accuracy:	5m
	Manfrotto SBH-100 Ball Head	Horizontal FOV:	56.5°	Viewpoint Grid Reference:	569530E, 169900N		



LOWER THAMES CROSSING
 5th Floor Beaufort House
 15 St Botolph Street
 London EC3A 7DT

Project	LOWER THAMES CROSSING
Drawing title	Figure 7.19 Photomontage - Viewpoint S-03 Winter Year 1 Sheet 2 of 4

Drawn	BB	Date - 20/09/2023	Status	S9	Revision	P01
Checked	SK	Date - 20/09/2023				
Approved	BF	Date - 20/09/2023				
Drawing number		HE540039-CJV-ELS-SZP_ZZ000000_Z-DR-LV-00326				
Application Document No. TR010032/APP/6.2						



P01	S9	20/09/2023	Deadline 5	BB	SK	BF
Rev	Status	Rev. Date	Purpose of revision	Drawn	Chck'd	Apprv'd

For location see Figure 7.16 - Visual Effects Drawing with Representative Viewpoint and Photomontage Locations		Summer Viewpoint:	S-03				
		Date and Time:	28/05/2019 16:50				
Camera:	Canon EOS 6D MkII	Visualisation Type:	Type 3	FL, Max Aperture:	50mm, 1.75	Distance to Order Limits:	0m
Lens:	Canon EF 50mm f/1.8 STM	Projection Type:	Cylindrical	Tripod Height:	1.5m	View Direction	(Centre of View): SSE
Equipment:	Manfrotto MA 454 Micro Positioning Plate	Enlargement Factor:	1.5	Viewpoint Ground Height:	86.7m AOD	Projection	(Centre of View): SSE
	Manfrotto SBH-100 Ball Head	Horizontal FOV:	56.5°	Viewpoint Grid Reference:	569530E, 169900N	GPS Accuracy:	5m



LOWER THAMES CROSSING
 5th Floor Beaufort House
 15 St Botolph Street
 London EC3A 7DT

Project: LOWER THAMES CROSSING
 Drawing title: Figure 7.19
 Baseline Photography - Viewpoint S-03
 Summer Year 15
 Sheet 3 of 4

Drawn	BB	Date - 20/09/2023	Status	S9	Revision	P01
Checked	SK	Date - 20/09/2023				
Approved	BF	Date - 20/09/2023				
Drawing number			HE540039-CJV-ELS-SZP_ZZ000000_Z-DR-LV-00327A			
Application Document No. TR010032/APP/6.2						



Rev	Status	Rev. Date	Purpose of revision	Drawn	Chck'd	Apprv'd
P01	S9	20/09/2023	Deadline 5	BB	SK	BF

For location see Figure 7.16 - Visual Effects Drawing with Representative Viewpoint and Photomontage Locations		Summer Viewpoint: Date and Time: S-03 28/05/2019 16:50	Camera: Canon EOS 6D MkII Lens: Canon EF 50mm f/1.8 STM Equipment: Manfrotto MA 454 Micro Positioning Plate Manfrotto SBH-100 Ball Head	Visualisation Type: Type 3 Projection Type: Cylindrical Enlargement Factor: 1.5 Horizontal FOV: 56.5°	FL, Max Aperture: 50mm, 1.75 Tripod Height: 1.5m Viewpoint Ground Height: 86.7m AOD Viewpoint Grid Reference: 569530E, 169900N	Distance to Order Limits: 0m View Direction (Centre of View): SSE GPS Accuracy: 5m
--	--	---	--	--	---	--

Client



LOWER THAMES CROSSING
 5th Floor Beaufort House
 15 St Botolph Street
 London EC3A 7DT

Project	LOWER THAMES CROSSING
Drawing title	Figure 7.19 Photomontage - Viewpoint S-03 Summer Year 15 Sheet 3 of 4

Drawn	BB	Date - 20/09/2023	Status	Revision
Checked	SK	Date - 20/09/2023	S9	P01
Approved	BF	Date - 20/09/2023	Application Document No. TR010032/APP/6.2	
Drawing number		HE540039-CJV-ELS-SZP_ZZ000000_Z-DR-LV-00327		



P01	S9	20/09/2023	Deadline 5	BB	SK	BF
Rev	Status	Rev. Date	Purpose of revision	Drawn	Chck'd	Apprv'd

For location see Figure 7.16 - Visual Effects Drawing with Representative Viewpoint and Photomontage Locations		Summer Viewpoint:	S-03				
		Date and Time:	28/05/2019 16:50				
Camera:	Canon EOS 6D MkII	Visualisation Type:	Type 3	FL, Max Aperture:	50mm, 1.75	Distance to Order Limits:	0m
Lens:	Canon EF 50mm f/1.8 STM	Projection Type:	Cylindrical	Tripod Height:	1.5m	View Direction	(Centre of View): SSE
Equipment:	Manfrotto MA 454 Micro Positioning Plate	Enlargement Factor:	1.5	Viewpoint Ground Height:	86.7m AOD	GPS Accuracy:	5m
	Manfrotto SBH-100 Ball Head	Horizontal FOV:	56.5°	Viewpoint Grid Reference:	569530E, 169900N		



LOWER THAMES CROSSING
 5th Floor Beaufort House
 15 St Botolph Street
 London EC3A 7DT

Project	LOWER THAMES CROSSING
Drawing title	Figure 7.19 Baseline Photography - Viewpoint S-03 Summer Year 15 Sheet 4 of 4

Drawn	BB	Date - 20/09/2023	Status	S9	Revision	P01
Checked	SK	Date - 20/09/2023				
Approved	BF	Date - 20/09/2023	Application Document No. TR010032/APP/6.2			
Drawing number		HE540039-CJV-ELS-SZP_ZZ000000_Z-DR-LV-00328A				



P01	S9	20/09/2023	Deadline 5	BB	SK	BF
Rev	Status	Rev. Date	Purpose of revision	Drawn	Chck'd	Apprv'd

For location see Figure 7.16 - Visual Effects Drawing with Representative Viewpoint and Photomontage Locations		Summer Viewpoint:	S-03				
		Date and Time:	28/05/2019 16:50				
Camera:	Canon EOS 6D MkII	Visualisation Type:	Type 3	FL, Max Aperture:	50mm, 1.75	Distance to Order Limits:	0m
Lens:	Canon EF 50mm f/1.8 STM	Projection Type:	Cylindrical	Tripod Height:	1.5m	View Direction	(Centre of View): SSE
Equipment:	Manfrotto MA 454 Micro Positioning Plate	Enlargement Factor:	1.5	Viewpoint Ground Height:	86.7m AOD	GPS Accuracy:	5m
	Manfrotto SBH-100 Ball Head	Horizontal FOV:	56.5°	Viewpoint Grid Reference:	569530E, 169900N		

Client

LOWER THAMES CROSSING
 5th Floor Beaufort House
 15 St Botolph Street
 London EC3A 7DT

Project	LOWER THAMES CROSSING
Drawing title	Figure 7.19 Photomontage - Viewpoint S-03 Summer Year 15 Sheet 4 of 4

Drawn	BB	Date - 20/09/2023	Status	S9	Revision	P01
Checked	SK	Date - 20/09/2023				
Approved	BF	Date - 20/09/2023	Application Document No. TR010032/APP/6.2			
Drawing number		HE540039-CJV-ELS-SZP_ZZ000000_Z-DR-LV-00328				



Rev	Status	Rev. Date	Purpose of revision	Drawn	Chck'd	Apprv'd
P01	S8	05/08/2022	First Issued	BB	HP	SK

For location see Figure 7.16 - Visual Effects Drawing with Representative Viewpoint and Photomontage Locations

Camera: Canon EOS 6D MkII
 Lens: Canon EF 50mm f/1.8 STM
 Equipment: Manfrotto MA 454 Micro Positioning Plate
 Manfrotto SBH-100 Ball Head

Winter Viewpoint:
 Date and Time: S-05a
 03/12/2019 13:28

Visualisation Type: Type 3
 Projection Type: Cylindrical
 Enlargement Factor: 1.5
 Horizontal FOV: 56.5°

FL, Max Aperture: 50mm, 1.75
 Tripod Height: 1.94m
 Viewpoint Ground Height: 84.2m AOD
 Viewpoint Grid Reference: 569461E, 169552N

Distance to Order Limits: 0m
 View Direction (Centre of View): W
 GPS Accuracy: 5m

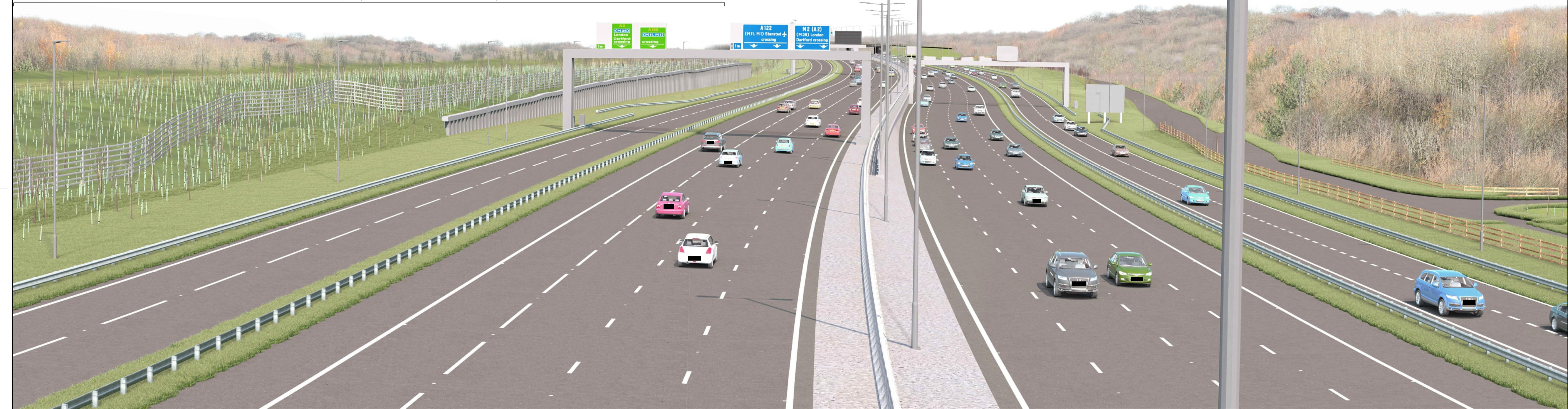


LOWER THAMES CROSSING
 5th Floor Beaufort House
 15 St Botolph Street
 London EC3A 7DT

Project: LOWER THAMES CROSSING
 Drawing title: Figure 7.19
 Baseline Photography - Viewpoint S-05a
 Winter Year 1
 Sheet 1 of 2

Drawn	BB	Date - 05/08/2022	Status	Revision
Checked	HP	Date - 05/08/2022	S8	P01
Approved	SK	Date - 05/08/2022	Application Document No. TR010032/APP/6.2	
Drawing number HE540039-CJV-ELS-SZP_ZZ000000_Z-DR-LV-00287A				

Indicative extent of increased visibility of High Speed 1 infrastructure and occasional passing trains



P02	S9	07/08/2023	Deadline 3	BB	HP	SK
P01	S8	05/08/2022	First Issued	BB	HP	SK
Rev	Status	Rev. Date	Purpose of revision	Drawn	Chck'd	Apprv'd

For location see Figure 7.16 - Visual Effects Drawing with Representative Viewpoint and Photomontage Locations		Winter Viewpoint: Date and Time:	S-05a 03/12/2019 13:28	Visualisation Type: Projection Type: Enlargement Factor: Horizontal FOV:	Type 3 Cylindrical 1.5 56.5°	FL, Max Aperture: Tripod Height: Viewpoint Ground Height: Viewpoint Grid Reference:	50mm, 1.75 1.94m 84.2m AOD 569461E, 169552N	Distance to Order Limits: View Direction (Centre of View): GPS Accuracy:	0m W 5m
--	--	--	---------------------------	--	---------------------------------------	---	--	--	---------------



Client
LOWER THAMES CROSSING
5th Floor Beaufort House
15 St Botolph Street
London EC3A 7DT

Project
LOWER THAMES CROSSING
Drawing title
Figure 7.19
Photomontage - Viewpoint S-05a
Winter Year 1
Sheet 1 of 2

Drawn	BB	Date - 07/08/2023	Status	Revision
Checked	HP	Date - 07/08/2023	S9	P02
Approved	SK	Date - 07/08/2023	Application Document No. TR010032/APP/6.2	
Drawing number		HE540039-CJV-ELS-SZP_ZZ000000_Z-DR-LV-00287		



P01	S8	05/08/2022	First Issued	BB	HP	SK
Rev	Status	Rev. Date	Purpose of revision	Drawn	Chck'd	Apprv'd

For location see Figure 7.16 - Visual Effects Drawing with Representative Viewpoint and Photomontage Locations		Summer Viewpoint: Date and Time:	S-05a 25/07/2019 10:58
Camera:	Canon EOS 6D MkII	Visualisation Type:	Type 3
Lens:	Canon EF 50mm f/1.8 STM	Projection Type:	Cylindrical
Equipment:	Manfrotto MA 454 Micro Positioning Plate	Enlargement Factor:	1.5
	Manfrotto SBH-100 Ball Head	Horizontal FOV:	56.5°
FL, Max Aperture:	50mm, 1.75	Distance to Order Limits:	0m
Tripod Height:	1.94m	View Direction:	W
Viewpoint Ground Height:	84.2m AOD	(Centre of View):	W
Viewpoint Grid Reference:	569461E, 169552N	GPS Accuracy:	5m



LOWER THAMES CROSSING
5th Floor Beaufort House
15 St Botolph Street
London EC3A 7DT

Project LOWER THAMES CROSSING
Drawing title Figure 7.19
Baseline Photography - Viewpoint S-05a
Summer Year 15
Sheet 2 of 2

Drawn	BB	Date - 05/08/2022	Status	Revision
Checked	HP	Date - 05/08/2022	S8	P01
Approved	SK	Date - 05/08/2022	Application Document No. TR010032/APP/6.2	
Drawing number		HE540039-CJV-ELS-SZP_ZZ000000_Z-DR-LV-00288A		



P02	S9	07/08/2023	Deadline 3	BB	HP	SK
P01	S8	05/08/2022	First Issued	BB	HP	SK
Rev	Status	Rev. Date	Purpose of revision	Drawn	Chck'd	Apprv'd

For location see Figure 7.16 - Visual Effects Drawing with Representative Viewpoint and Photomontage Locations		Summer Viewpoint:	S-05a				
		Date and Time:	25/07/2019 10:58				
Camera:	Canon EOS 6D MkII	Visualisation Type:	Type 3	FL, Max Aperture:	50mm, 1.75	Distance to Order Limits:	0m
Lens:	Canon EF 50mm f/1.8 STM	Projection Type:	Cylindrical	Tripod Height:	1.94m	View Direction	(Centre of View)
Equipment:	Manfrotto MA 454 Micro Positioning Plate	Enlargement Factor:	1.5	Viewpoint Ground Height:	84.2m AOD	View Direction	W
	Manfrotto SBH-100 Ball Head	Horizontal FOV:	56.5°	Viewpoint Grid Reference:	569461E, 169552N	GPS Accuracy:	5m

Client

LOWER THAMES CROSSING
 5th Floor Beaufort House
 15 St Botolph Street
 London EC3A 7DT

Project LOWER THAMES CROSSING
 Drawing title Figure 7.19
 Photomontage - Viewpoint S-05a
 Summer Year 15
 Sheet 2 of 2

Drawn	BB	Date - 07/08/2023	Status	Revision
Checked	HP	Date - 07/08/2023	S9	P02
Approved	SK	Date - 07/08/2023	Application Document No. TR010032/APP/6.2	
Drawing number		HE540039-CJV-ELS-SZP_ZZ000000_Z-DR-LV-00288		



Rev	Status	Rev. Date	Purpose of revision	Drawn	Chck'd	Apprv'd
P01	S9	13/10/2023	Deadline 6	BB	SK	BF

For location see Figure 7.16 - Visual Effects Drawing with Representative Viewpoint and Photomontage Locations

Camera: Canon EOS 6D MkII
 Lens: Canon EF 50mm f/1.8 STM
 Equipment: Manfrotto MA 454 Micro Positioning Plate
 Manfrotto SBH-100 Ball Head

Winter Viewpoint:
 Date and Time: S-11
 05/03/2019 14:00

Visualisation Type: Type 3
 Projection Type: Cylindrical
 Enlargement Factor: 1.5
 Horizontal FOV: 56.5°

FL, Max Aperture: 50mm, 1.75
 Tripod Height: 1.5m
 Viewpoint Ground Height: 116.4m AOD
 Viewpoint Grid Reference: 568247E, 169475N

Distance to Order Limits: 64m
 View Direction (Centre of View): NNW
 GPS Accuracy: 5m



Client
LOWER THAMES CROSSING
 5th Floor Beaufort House
 15 St Botolph Street
 London EC3A 7DT

Project
 LOWER THAMES CROSSING
 Drawing title: Figure 7.19
 Baseline Photography - Viewpoint S-11
 Winter Year 1
 Sheet 1 of 6

Drawn	BB	Date - 13/10/2023	Status	Revision
Checked	SK	Date - 13/10/2023	S9	P01
Approved	BF	Date - 13/10/2023	Application Document No. TR010032/APP/6.2	
Drawing number		HE540039-CJV-ELS-SZP_ZZ000000_Z-DR-LV-00329A		



P01	S9	13/10/2023	Deadline 6	BB	SK	BF
Rev	Status	Rev. Date	Purpose of revision	Drawn	Chck'd	Apprv'd

For location see Figure 7.16 - Visual Effects Drawing with Representative Viewpoint and Photomontage Locations		Winter Viewpoint:	S-11		
		Date and Time:	05/03/2019 14:00		
Camera:	Canon EOS 6D MkII	Visualisation Type:	Type 3	FL, Max Aperture:	50mm, 1.75
Lens:	Canon EF 50mm f/1.8 STM	Projection Type:	Cylindrical	Tripod Height:	1.5m
Equipment:	Manfrotto MA 454 Micro Positioning Plate	Enlargement Factor:	1.5	Viewpoint Ground Height:	116.4m AOD
	Manfrotto SBH-100 Ball Head	Horizontal FOV:	56.5°	Viewpoint Grid Reference:	568247E, 169475N
		Distance to Order Limits:	64m	View Direction (Centre of View):	NNW
		GPS Accuracy:	5m		



LOWER THAMES CROSSING
 5th Floor Beaufort House
 15 St Botolph Street
 London EC3A 7DT

Project	LOWER THAMES CROSSING
Drawing title	Figure 7.19 Photomontage - Viewpoint S-11 Winter Year 1 Sheet 1 of 6

Drawn	BB	Date - 13/10/2023	Status	S9	Revision	P01
Checked	SK	Date - 13/10/2023	Application Document No. TR010032/APP/6.2			
Approved	BF	Date - 13/10/2023	Drawing number			
HE540039-CJV-ELS-SZP_ZZ000000_Z-DR-LV-00329						



P01	S9	13/10/2023	Deadline 6	BB	SK	BF
Rev	Status	Rev. Date	Purpose of revision	Drawn	Chck'd	Apprv'd

For location see Figure 7.16 - Visual Effects Drawing with Representative Viewpoint and Photomontage Locations

Camera: Canon EOS 6D MkII
 Lens: Canon EF 50mm f/1.8 STM
 Equipment: Manfrotto MA 454 Micro Positioning Plate
 Manfrotto SBH-100 Ball Head

Winter Viewpoint:
 Date and Time: S-11
 05/03/2019 14:00

Visualisation Type: Type 3
 Projection Type: Cylindrical
 Enlargement Factor: 1.5
 Horizontal FOV: 56.5°

FL, Max Aperture: 50mm, 1.75
 Tripod Height: 1.5m
 Viewpoint Ground Height: 116.4m AOD
 Viewpoint Grid Reference: 568247E, 169475N

Distance to Order Limits: 64m
 View Direction (Centre of View): NNW
 GPS Accuracy: 5m



LOWER THAMES CROSSING
 5th Floor Beaufort House
 15 St Botolph Street
 London EC3A 7DT

Project: LOWER THAMES CROSSING
 Drawing title: Figure 7.19
 Baseline Photography - Viewpoint S-11
 Winter Year 1
 Sheet 2 of 6

Drawn	BB	Date - 13/10/2023	Status	Revision
Checked	SK	Date - 13/10/2023	S9	P01
Approved	BF	Date - 13/10/2023	Application Document No. TR010032/APP/6.2	
Drawing number		HE540039-CJV-ELS-SZP_ZZ000000_Z-DR-LV-00330A		



P01	S9	13/10/2023	Deadline 6	BB	SK	BF
Rev	Status	Rev. Date	Purpose of revision	Drawn	Chck'd	Apprv'd

For location see Figure 7.16 - Visual Effects Drawing with Representative Viewpoint and Photomontage Locations		Winter Viewpoint:	S-11				
		Date and Time:	05/03/2019 14:00				
Camera:	Canon EOS 6D MkII	Visualisation Type:	Type 3	FL, Max Aperture:	50mm, 1.75	Distance to Order Limits:	64m
Lens:	Canon EF 50mm f/1.8 STM	Projection Type:	Cylindrical	Tripod Height:	1.5m	View Direction	NNW
Equipment:	Manfrotto MA 454 Micro Positioning Plate	Enlargement Factor:	1.5	Viewpoint Ground Height:	116.4m AOD	(Centre of View):	NNW
	Manfrotto SBH-100 Ball Head	Horizontal FOV:	56.5°	Viewpoint Grid Reference:	568247E, 169475N	GPS Accuracy:	5m



LOWER THAMES CROSSING
 5th Floor Beaufort House
 15 St Botolph Street
 London EC3A 7DT

Project	LOWER THAMES CROSSING
Drawing title	Figure 7.19 Photomontage - Viewpoint S-11 Winter Year 1 Sheet 2 of 6

Drawn	BB	Date - 13/10/2023	Status	S9	Revision	P01
Checked	SK	Date - 13/10/2023				
Approved	BF	Date - 13/10/2023				
Drawing number			HE540039-CJV-ELS-SZP_ZZ000000_Z-DR-LV-00330			
Application Document No. TR010032/APP/6.2						



P01	S9	13/10/2023	Deadline 6	BB	SK	BF
Rev	Status	Rev. Date	Purpose of revision	Drawn	Chck'd	Apprv'd

For location see Figure 7.16 - Visual Effects Drawing with Representative Viewpoint and Photomontage Locations

Camera: Canon EOS 6D MkII
 Lens: Canon EF 50mm f/1.8 STM
 Equipment: Manfrotto MA 454 Micro Positioning Plate
 Manfrotto SBH-100 Ball Head

Winter Viewpoint:
 Date and Time: S-11
 05/03/2019 14:00

Visualisation Type: Type 3
 Projection Type: Cylindrical
 Enlargement Factor: 1.5
 Horizontal FOV: 56.5°

FL, Max Aperture: 50mm, 1.75
 Tripod Height: 1.5m
 Viewpoint Ground Height: 116.4m AOD
 Viewpoint Grid Reference: 568247E, 169475N

Distance to Order Limits: 64m
 View Direction (Centre of View): NNW
 GPS Accuracy: 5m



LOWER THAMES CROSSING
 5th Floor Beaufort House
 15 St Botolph Street
 London EC3A 7DT

Project: LOWER THAMES CROSSING
 Drawing title: Figure 7.19
 Baseline Photography - Viewpoint S-11
 Winter Year 1
 Sheet 3 of 6

Drawn	BB	Date - 13/10/2023	Status	Revision
Checked	SK	Date - 13/10/2023	S9	P01
Approved	BF	Date - 13/10/2023	Application Document No. TR010032/APP/6.2	
Drawing number		HE540039-CJV-ELS-SZP_ZZ000000_Z-DR-LV-00331A		



P01	S9	13/10/2023	Deadline 6	BB	SK	BF
Rev	Status	Rev. Date	Purpose of revision	Drawn	Chck'd	Apprv'd

For location see Figure 7.16 - Visual Effects Drawing with Representative Viewpoint and Photomontage Locations

Camera: Canon EOS 6D MkII
 Lens: Canon EF 50mm f/1.8 STM
 Equipment: Manfrotto MA 454 Micro Positioning Plate
 Manfrotto SBH-100 Ball Head

Winter Viewpoint:
 Date and Time: S-11
 05/03/2019 14:00

Visualisation Type: Type 3
 Projection Type: Cylindrical
 Enlargement Factor: 1.5
 Horizontal FOV: 56.5°

FL, Max Aperture: 50mm, 1.75
 Tripod Height: 1.5m
 Viewpoint Ground Height: 116.4m AOD
 Viewpoint Grid Reference: 568247E, 169475N

Distance to Order Limits: 64m
 View Direction (Centre of View): NNW
 GPS Accuracy: 5m



Client
LOWER THAMES CROSSING
 5th Floor Beaufort House
 15 St Botolph Street
 London EC3A 7DT

Project
 LOWER THAMES CROSSING
 Drawing title
 Figure 7.19
 Photomontage - Viewpoint S-11
 Winter Year 1
 Sheet 3 of 6

Drawn	BB	Date - 13/10/2023	Status	Revision
Checked	SK	Date - 13/10/2023	S9	P01
Approved	BF	Date - 13/10/2023	Application Document No. TR010032/APP/6.2	
Drawing number		HE540039-CJV-ELS-SZP_ZZ000000_Z-DR-LV-00331		



P01	S9	13/10/2023	Deadline 6	BB	SK	BF
Rev	Status	Rev. Date	Purpose of revision	Drawn	Chck'd	Apprv'd

For location see Figure 7.16 - Visual Effects Drawing with Representative Viewpoint and Photomontage Locations		Summer Viewpoint:	S-11				
		Date and Time:	28/05/2019 11:35				
Camera:	Canon EOS 6D MkII	Visualisation Type:	Type 3	FL, Max Aperture:	50mm, 1.75	Distance to Order Limits:	64m
Lens:	Canon EF 50mm f/1.8 STM	Projection Type:	Cylindrical	Tripod Height:	1.5m	View Direction	NNW
Equipment:	Manfrotto MA 454 Micro Positioning Plate	Enlargement Factor:	1.5	Viewpoint Ground Height:	116.4m AOD	(Centre of View):	NNW
	Manfrotto SBH-100 Ball Head	Horizontal FOV:	56.5°	Viewpoint Grid Reference:	568247E, 169475N	GPS Accuracy:	5m



LOWER THAMES CROSSING
 5th Floor Beaufort House
 15 St Botolph Street
 London EC3A 7DT

Project	LOWER THAMES CROSSING
Drawing title	Figure 7.19 Baseline Photography - Viewpoint S-11 Summer Year 15 Sheet 4 of 6

Drawn	BB	Date - 13/10/2023	Status	S9	Revision	P01
Checked	SK	Date - 13/10/2023				
Approved	BF	Date - 13/10/2023	Application Document No. TR010032/APP/6.2			
Drawing number		HE540039-CJV-ELS-SZP_ZZ000000_Z-DR-LV-00332A				



Rev	Status	Rev. Date	Purpose of revision	Drawn	Chck'd	Apprv'd
P01	S9	13/10/2023	Deadline 6	BB	SK	BF

For location see Figure 7.16 - Visual Effects Drawing with Representative Viewpoint and Photomontage Locations

Summer Viewpoint:	S-11	Date and Time:	28/05/2019 11:35
Camera:	Canon EOS 6D MkII	Visualisation Type:	Type 3
Lens:	Canon EF 50mm f/1.8 STM	Projection Type:	Cylindrical
Equipment:	Manfrotto MA 454 Micro Positioning Plate	Enlargement Factor:	1.5
	Manfrotto SBH-100 Ball Head	Horizontal FOV:	56.5°
FL, Max Aperture:	50mm, 1.75	Distance to Order Limits:	64m
Tripod Height:	1.5m	View Direction (Centre of View):	NNW
Viewpoint Ground Height:	116.4m AOD	GPS Accuracy:	5m
Viewpoint Grid Reference:	568247E, 169475N		



LOWER THAMES CROSSING
 5th Floor Beaufort House
 15 St Botolph Street
 London EC3A 7DT

Project LOWER THAMES CROSSING
Drawing title Figure 7.19
 Photomontage - Viewpoint S-11
 Summer Year 15
 Sheet 4 of 6

Drawn	BB	Date - 13/10/2023	Status	S9	Revision	P01
Checked	SK	Date - 13/10/2023	Application Document No. TR010032/APP/6.2			
Approved	BF	Date - 13/10/2023	Drawing number			
HE540039-CJV-ELS-SZP_ZZ000000_Z-DR-LV-00332						



Rev	Status	Rev. Date	Purpose of revision	Drawn	Chck'd	Apprv'd
P01	S9	13/10/2023	Deadline 6	BB	SK	BF

For location see Figure 7.16 - Visual Effects Drawing with Representative Viewpoint and Photomontage Locations		Summer Viewpoint:		S-11	
		Date and Time:		28/05/2019 11:35	
Camera:	Canon EOS 6D MkII	Visualisation Type:	Type 3	FL, Max Aperture:	50mm, 1.75
Lens:	Canon EF 50mm f/1.8 STM	Projection Type:	Cylindrical	Tripod Height:	1.5m
Equipment:	Manfrotto MA 454 Micro Positioning Plate	Enlargement Factor:	1.5	Viewpoint Ground Height:	116.4m AOD
	Manfrotto SBH-100 Ball Head	Horizontal FOV:	56.5°	Viewpoint Grid Reference:	568247E, 169475N
				Distance to Order Limits:	64m
				View Direction (Centre of View):	NNW
				GPS Accuracy:	5m



LOWER THAMES CROSSING
 5th Floor Beaufort House
 15 St Botolph Street
 London EC3A 7DT

Project: LOWER THAMES CROSSING
 Drawing title: Figure 7.19
 Baseline Photography - Viewpoint S-11
 Summer Year 15
 Sheet 5 of 6

Drawn	BB	Date - 13/10/2023	Status	S9	Revision	P01
Checked	SK	Date - 13/10/2023				
Approved	BF	Date - 13/10/2023				
Drawing number			HE540039-CJV-ELS-SZP_ZZ000000_Z-DR-LV-00333A			
			Application Document No. TR010032/APP/6.2			



P01	S9	13/10/2023	Deadline 6	BB	SK	BF
Rev	Status	Rev. Date	Purpose of revision	Drawn	Chck'd	Apprv'd

For location see Figure 7.16 - Visual Effects Drawing with Representative Viewpoint and Photomontage Locations

Camera: Canon EOS 6D MkII
 Lens: Canon EF 50mm f/1.8 STM
 Equipment: Manfrotto MA 454 Micro Positioning Plate
 Manfrotto SBH-100 Ball Head

Summer Viewpoint: S-11
 Date and Time: 28/05/2019 11:35

Visualisation Type: Type 3
 Projection Type: Cylindrical
 Enlargement Factor: 1.5
 Horizontal FOV: 56.5°

FL, Max Aperture: 50mm, 1.75
 Tripod Height: 1.5m
 Viewpoint Ground Height: 116.4m AOD
 Viewpoint Grid Reference: 568247E, 169475N

Distance to Order Limits: 64m
 View Direction (Centre of View): NNW
 GPS Accuracy: 5m



Client

LOWER THAMES CROSSING
 5th Floor Beaufort House
 15 St Botolph Street
 London EC3A 7DT

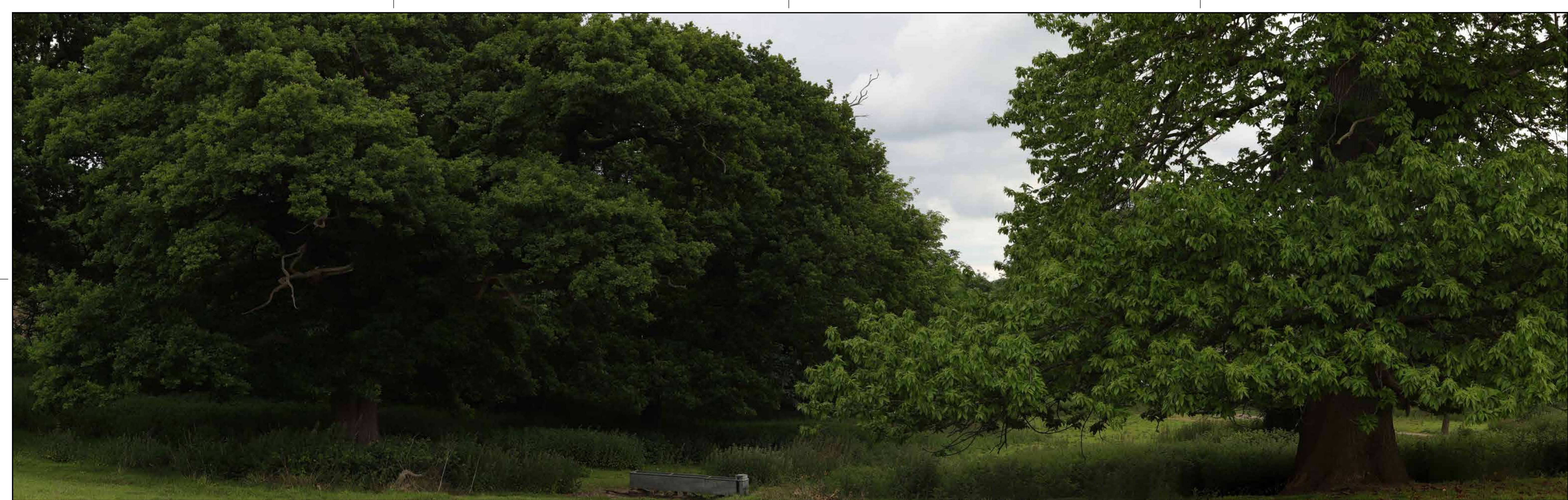
Project

LOWER THAMES CROSSING

Drawing title

Figure 7.19
 Photomontage - Viewpoint S-11
 Summer Year 15
 Sheet 5 of 6

Drawn	BB	Date - 13/10/2023	Status	Revision
Checked	SK	Date - 13/10/2023	S9	P01
Approved	BF	Date - 13/10/2023	Application Document No. TR010032/APP/6.2	
Drawing number		HE540039-CJV-ELS-SZP_ZZ000000_Z-DR-LV-00333		



Rev	Status	Rev. Date	Purpose of revision	Drawn	Chck'd	Apprv'd
P01	S9	13/10/2023	Deadline 6	BB	SK	BF

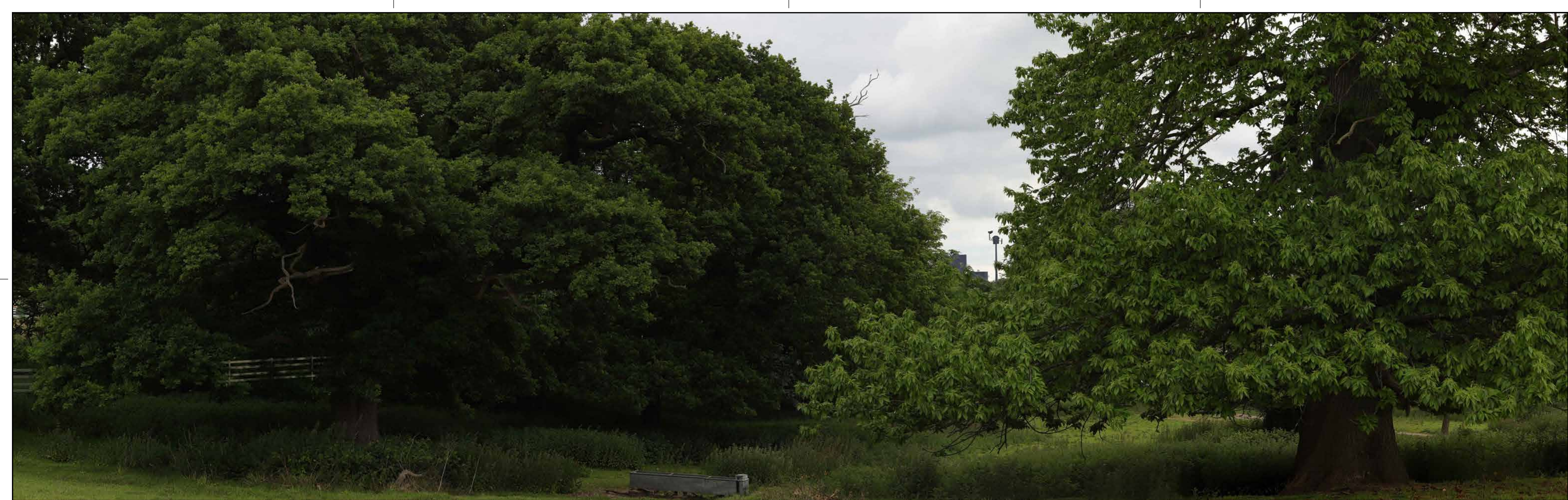
For location see Figure 7.16 - Visual Effects Drawing with Representative Viewpoint and Photomontage Locations		Summer Viewpoint:	S-11				
		Date and Time:	28/05/2019 11:35				
Camera:	Canon EOS 6D MkII	Visualisation Type:	Type 3	FL, Max Aperture:	50mm, 1.75	Distance to Order Limits:	64m
Lens:	Canon EF 50mm f/1.8 STM	Projection Type:	Cylindrical	Tripod Height:	1.5m	View Direction	(Centre of View): NNW
Equipment:	Manfrotto MA 454 Micro Positioning Plate	Enlargement Factor:	1.5	Viewpoint Ground Height:	116.4m AOD	GPS Accuracy:	5m
	Manfrotto SBH-100 Ball Head	Horizontal FOV:	56.5°	Viewpoint Grid Reference:	568247E, 169475N		



LOWER THAMES CROSSING
 5th Floor Beaufort House
 15 St Botolph Street
 London EC3A 7DT

Project	LOWER THAMES CROSSING
Drawing title	Figure 7.19 Baseline Photography - Viewpoint S-11 Summer Year 15 Sheet 6 of 6

Drawn	BB	Date - 13/10/2023	Status	S9	Revision	P01
Checked	SK	Date - 13/10/2023	Application Document No. TR010032/APP/6.2			
Approved	BF	Date - 13/10/2023	Drawing number			
HE540039-CJV-ELS-SZP_ZZ000000_Z-DR-LV-00334A						



Rev	Status	Rev. Date	Purpose of revision	Drawn	Chck'd	Apprv'd
P01	S9	13/10/2023	Deadline 6	BB	SK	BF

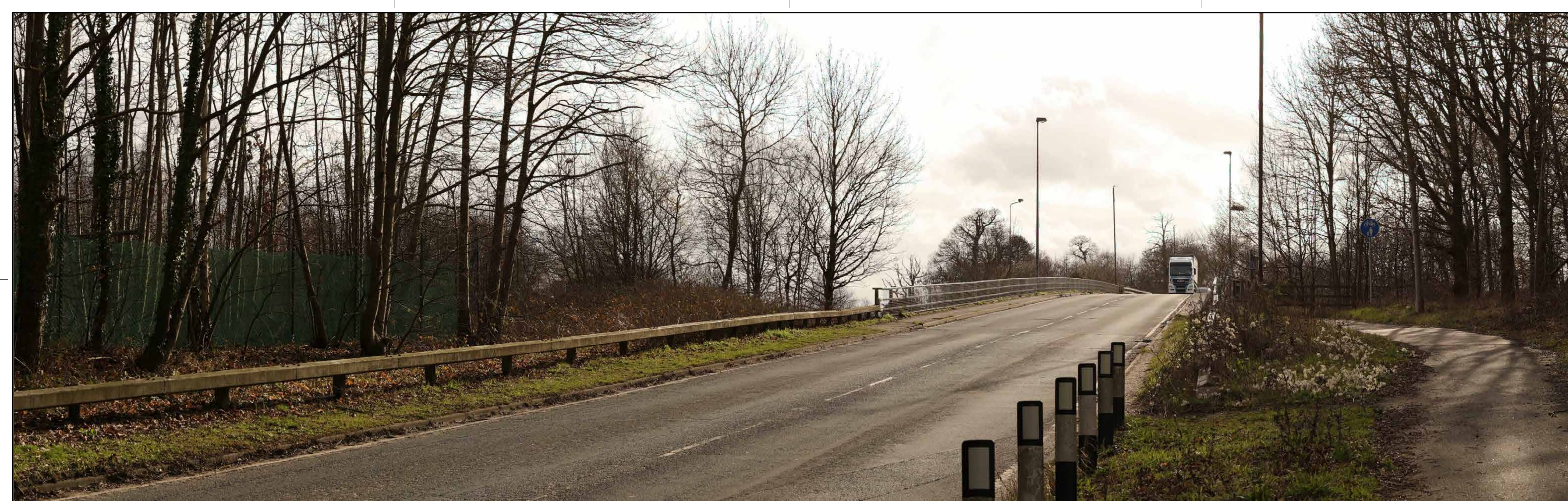
For location see Figure 7.16 - Visual Effects Drawing with Representative Viewpoint and Photomontage Locations		Summer Viewpoint:	S-11				
		Date and Time:	28/05/2019 11:35				
Camera:	Canon EOS 6D MkII	Visualisation Type:	Type 3	FL, Max Aperture:	50mm, 1.75	Distance to Order Limits:	64m
Lens:	Canon EF 50mm f/1.8 STM	Projection Type:	Cylindrical	Tripod Height:	1.5m	View Direction	(Centre of View): NNW
Equipment:	Manfrotto MA 454 Micro Positioning Plate	Enlargement Factor:	1.5	Viewpoint Ground Height:	116.4m AOD	GPS Accuracy:	5m
	Manfrotto SBH-100 Ball Head	Horizontal FOV:	56.5°	Viewpoint Grid Reference:	568247E, 169475N		



LOWER THAMES CROSSING
 5th Floor Beaufort House
 15 St Botolph Street
 London EC3A 7DT

Project	LOWER THAMES CROSSING
Drawing title	Figure 7.19 Photomontage - Viewpoint S-11 Summer Year 15 Sheet 6 of 6

Drawn	BB	Date - 13/10/2023	Status	S9	Revision	P01
Checked	SK	Date - 13/10/2023	Application Document No. TR010032/APP/6.2			
Approved	BF	Date - 13/10/2023	Drawing number			
HE540039-CJV-ELS-SZP_ZZ000000_Z-DR-LV-00334						



P01	S8	05/08/2022	First Issued	BB	HP	SK
Rev	Status	Rev. Date	Purpose of revision	Drawn	Chck'd	Apprv'd

For location see Figure 7.16 - Visual Effects Drawing with Representative Viewpoint and Photomontage Locations

Camera: Canon EOS 6D MkII
 Lens: Canon EF 50mm f/1.8 STM
 Equipment: Manfrotto MA 454 Micro Positioning Plate
 Manfrotto SBH-100 Ball Head

Winter Viewpoint:
 Date and Time: S-12
 05/03/2019 15:05

Visualisation Type: Type 3
 Projection Type: Cylindrical
 Enlargement Factor: 1.5
 Horizontal FOV: 56.5°

FL, Max Aperture: 50mm, 1.75
 Tripod Height: 1.5m
 Viewpoint Ground Height: 109.6m AOD
 Viewpoint Grid Reference: 568324E, 169733N

Distance to Order Limits: 0m
 View Direction (Centre of View): SSW
 GPS Accuracy: 5m



LOWER THAMES CROSSING
 5th Floor Beaufort House
 15 St Botolph Street
 London EC3A 7DT

Project: LOWER THAMES CROSSING
 Drawing title: Figure 7.19
 Baseline Photography - Viewpoint S-12
 Winter Year 1
 Sheet 1 of 2

Drawn	BB	Date - 05/08/2022	Status	Revision
Checked	HP	Date - 05/08/2022	S8	P01
Approved	SK	Date - 05/08/2022	Application Document No. TR010032/APP/6.2	
Drawing number HE540039-CJV-ELS-SZP_ZZ000000_Z-DR-LV-00289A				



P01	S8	05/08/2022	First Issued	BB	HP	SK
Rev	Status	Rev. Date	Purpose of revision	Drawn	Chck'd	Apprv'd

For location see Figure 7.16 - Visual Effects Drawing with Representative Viewpoint and Photomontage Locations		Winter Viewpoint:	S-12				
		Date and Time:	05/03/2019 15:05				
Camera:	Canon EOS 6D MkII	Visualisation Type:	Type 3	FL, Max Aperture:	50mm, 1.75	Distance to Order Limits:	0m
Lens:	Canon EF 50mm f/1.8 STM	Projection Type:	Cylindrical	Tripod Height:	1.5m	View Direction:	SSW
Equipment:	Manfrotto MA 454 Micro Positioning Plate	Enlargement Factor:	1.5	Viewpoint Ground Height:	109.6m AOD	(Centre of View):	SSW
	Manfrotto SBH-100 Ball Head	Horizontal FOV:	56.5°	Viewpoint Grid Reference:	568324E, 169733N	GPS Accuracy:	5m



Client
LOWER THAMES CROSSING
 5th Floor Beaufort House
 15 St Botolph Street
 London EC3A 7DT

Project
 LOWER THAMES CROSSING
Drawing title
 Figure 7.19
 Photomontage - Viewpoint S-12
 Winter Year 1
 Sheet 1 of 2

Drawn	BB	Date - 05/08/2022	Status	S8	Revision	P01
Checked	HP	Date - 05/08/2022	Application Document No. TR010032/APP/6.2			
Approved	SK	Date - 05/08/2022	Drawing number			
HE540039-CJV-ELS-SZP_ZZ000000_Z-DR-LV-00289						



For location see Figure 7.16 - Visual Effects Drawing with Representative Viewpoint and Photomontage Locations

Summer Viewpoint: S-12
Date and Time: 30/05/2019 10:07

Camera: Canon EOS 6D MkII
Lens: Canon EF 50mm f/1.8 STM
Equipment: Manfrotto MA 454 Micro Positioning Plate
Manfrotto SBH-100 Ball Head

Visualisation Type: Type 3
Projection Type: Cylindrical
Enlargement Factor: 1.5
Horizontal FOV: 56.5°

FL, Max Aperture: 50mm, 1.75
Tripod Height: 1.5m
Viewpoint Ground Height: 109.6m AOD
Viewpoint Grid Reference: 568324E, 169733N

Distance to Order Limits: 0m
View Direction (Centre of View): SSW
GPS Accuracy: 5m



LOWER THAMES CROSSING
5th Floor Beaufort House
15 St Botolph Street
London EC3A 7DT

Project: LOWER THAMES CROSSING
Drawing title: Figure 7.19
Baseline Photography - Viewpoint S-12
Summer Year 15
Sheet 2 of 2

Drawn	BB	Date - 05/08/2022	Status	Revision
Checked	HP	Date - 05/08/2022	S8	P01
Approved	SK	Date - 05/08/2022	Application Document No. TR010032/APP/6.2	
Drawing number		HE540039-CJV-ELS-SZP_ZZ000000_Z-DR-LV-00290A		



P01	S8	05/08/2022	First Issued	BB	HP	SK
Rev	Status	Rev. Date	Purpose of revision	Drawn	Chck'd	Apprv'd

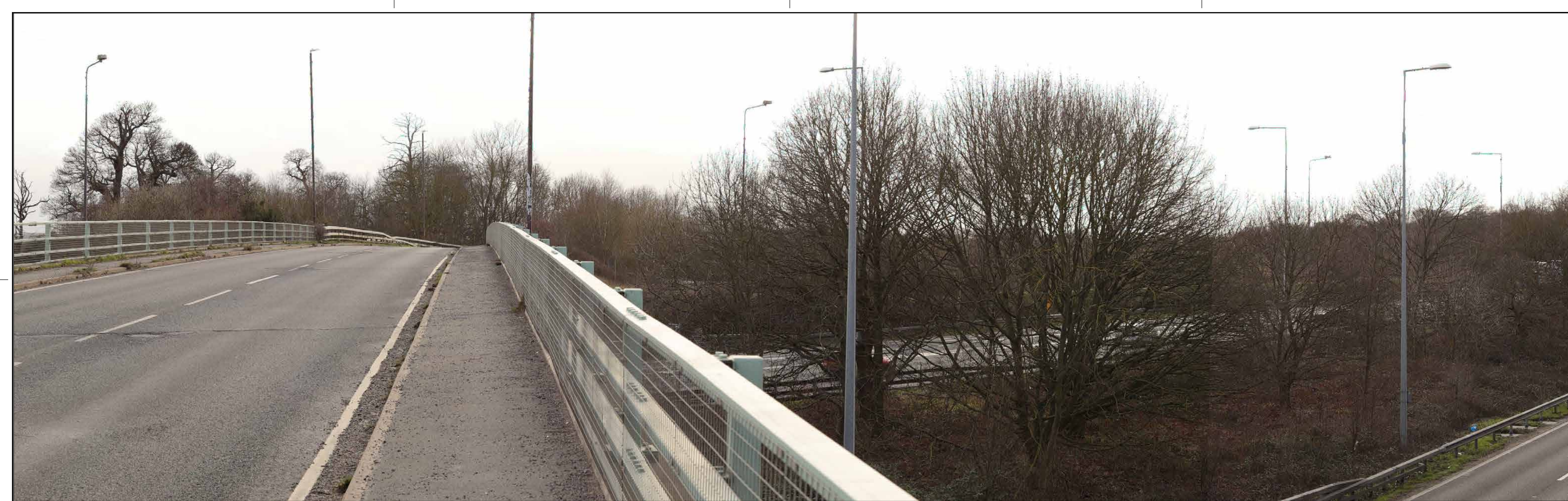
For location see Figure 7.16 - Visual Effects Drawing with Representative Viewpoint and Photomontage Locations		Summer Viewpoint:	S-12				
		Date and Time:	30/05/2019 10:07				
Camera:	Canon EOS 6D MkII	Visualisation Type:	Type 3	FL, Max Aperture:	50mm, 1.75	Distance to Order Limits:	0m
Lens:	Canon EF 50mm f/1.8 STM	Projection Type:	Cylindrical	Tripod Height:	1.5m	View Direction	(Centre of View): SSW
Equipment:	Manfrotto MA 454 Micro Positioning Plate	Enlargement Factor:	1.5	Viewpoint Ground Height:	109.6m AOD	GPS Accuracy:	5m
		Horizontal FOV:	56.5°	Viewpoint Grid Reference:	568324E, 169733N		



Client
LOWER THAMES CROSSING
 5th Floor Beaufort House
 15 St Botolph Street
 London EC3A 7DT

Project
 LOWER THAMES CROSSING
Drawing title
 Figure 7.19
 Photomontage - Viewpoint S-12
 Summer Year 15
 Sheet 2 of 2

Drawn	BB	Date - 05/08/2022	Status	S8	Revision	P01
Checked	HP	Date - 05/08/2022	Application Document No. TR010032/APP/6.2			
Approved	SK	Date - 05/08/2022	Drawing number			
HE540039-CJV-ELS-SZP_ZZ000000_Z-DR-LV-00290						



Rev	Status	Rev. Date	Purpose of revision	Drawn	Chck'd	Apprv'd
P01	S8	05/08/2022	First Issued	BB	HP	SK

For location see Figure 7.16 - Visual Effects Drawing with Representative Viewpoint and Photomontage Locations

Camera: Canon EOS 6D MkII
 Lens: Canon EF 50mm f/1.8 STM
 Equipment: Manfrotto MA 454 Micro Positioning Plate
 Manfrotto SBH-100 Ball Head

Winter Viewpoint:
 Date and Time: S-13
 05/03/2019 15:48

Visualisation Type: Type 3
 Projection Type: Cylindrical
 Enlargement Factor: 1.5
 Horizontal FOV: 56.5°

FL, Max Aperture: 50mm, 1.75
 Tripod Height: 1.65m
 Viewpoint Ground Height: 115.4m AOD
 Viewpoint Grid Reference: 568282E, 169684N

Distance to Order Limits: 0m
 View Direction (Centre of View): SSW
 GPS Accuracy: 5m



LOWER THAMES CROSSING
 5th Floor Beaufort House
 15 St Botolph Street
 London EC3A 7DT

Project: LOWER THAMES CROSSING
 Drawing title: Figure 7.19
 Baseline Photography - Viewpoint S-13
 Winter Year 1
 Sheet 1 of 4

Drawn	BB	Date - 05/08/2022	Status	Revision
Checked	HP	Date - 05/08/2022	S8	P01
Approved	SK	Date - 05/08/2022	Application Document No. TR010032/APP/6.2	
Drawing number HE540039-CJV-ELS-SZP_ZZ000000_Z-DR-LV-00291A				



P01	S8	05/08/2022	First Issued	BB	HP	SK
Rev	Status	Rev. Date	Purpose of revision	Drawn	Chck'd	Apprv'd

For location see Figure 7.16 - Visual Effects Drawing with Representative Viewpoint and Photomontage Locations

Camera: Canon EOS 6D MkII
 Lens: Canon EF 50mm f/1.8 STM
 Equipment: Manfrotto MA 454 Micro Positioning Plate
 Manfrotto SBH-100 Ball Head

Winter Viewpoint:
 Date and Time: S-13
 05/03/2019 15:48

Visualisation Type: Type 3
 Projection Type: Cylindrical
 Enlargement Factor: 1.5
 Horizontal FOV: 56.5°

FL, Max Aperture: 50mm, 1.75
 Tripod Height: 1.65m
 Viewpoint Ground Height: 115.4m AOD
 Viewpoint Grid Reference: 568282E, 169684N

Distance to Order Limits: 0m
 View Direction (Centre of View): SSW
 GPS Accuracy: 5m

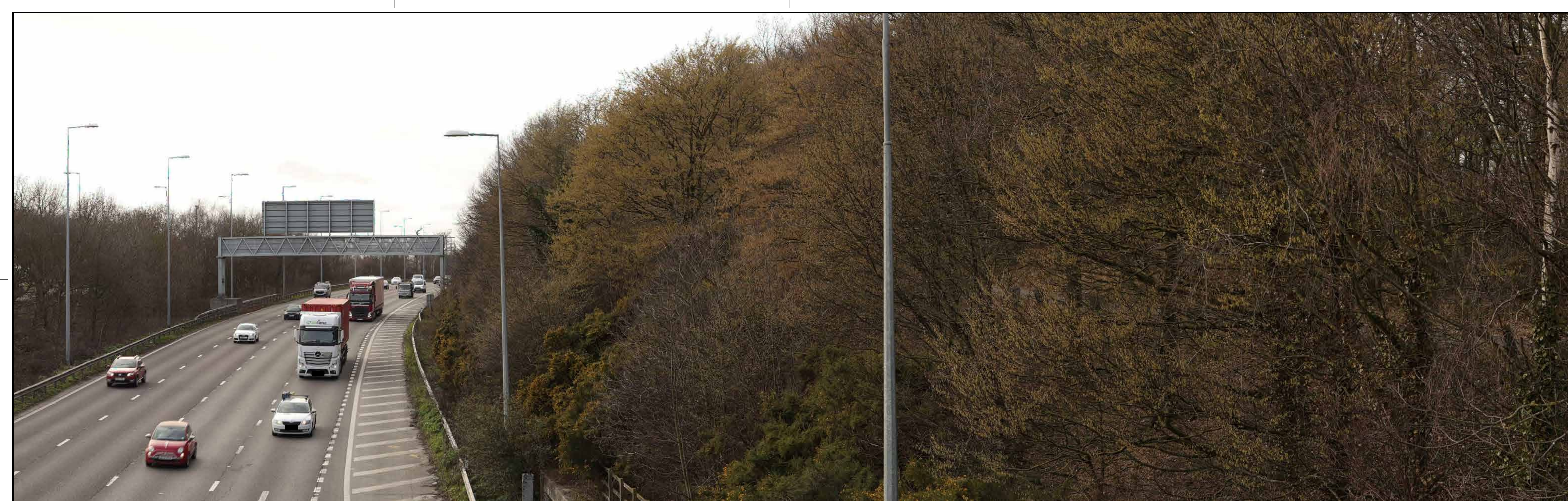


Client
LOWER THAMES CROSSING
 5th Floor Beaufort House
 15 St Botolph Street
 London EC3A 7DT

Project
 LOWER THAMES CROSSING

Drawing title
 Figure 7.19
 Photomontage - Viewpoint S-13
 Winter Year 1
 Sheet 1 of 4

Drawn	BB	Date - 05/08/2022	Status	Revision
Checked	HP	Date - 05/08/2022	S8	P01
Approved	SK	Date - 05/08/2022	Application Document No. TR010032/APP/6.2	
Drawing number		HE540039-CJV-ELS-SZP_ZZ000000_Z-DR-LV-00291		



Rev	Status	Rev. Date	Purpose of revision	Drawn	Chck'd	Apprv'd
P01	S8	05/08/2022	First Issued	BB	HP	SK

For location see Figure 7.16 - Visual Effects Drawing with Representative Viewpoint and Photomontage Locations

Camera: Canon EOS 6D MkII
 Lens: Canon EF 50mm f/1.8 STM
 Equipment: Manfrotto MA 454 Micro Positioning Plate
 Manfrotto SBH-100 Ball Head

Winter Viewpoint:
 Date and Time: S-13
 05/03/2019 15:48

Visualisation Type: Type 3
 Projection Type: Cylindrical
 Enlargement Factor: 1.5
 Horizontal FOV: 56.5°

FL, Max Aperture: 50mm, 1.75
 Tripod Height: 1.65m
 Viewpoint Ground Height: 115.4m AOD
 Viewpoint Grid Reference: 568282E, 169684N

Distance to Order Limits: 0m
 View Direction (Centre of View): SSW
 GPS Accuracy: 5m



LOWER THAMES CROSSING
 5th Floor Beaufort House
 15 St Botolph Street
 London EC3A 7DT

Project: LOWER THAMES CROSSING
 Drawing title: Figure 7.19
 Baseline Photography - Viewpoint S-13
 Winter Year 1
 Sheet 2 of 4

Drawn	BB	Date - 05/08/2022	Status	S8	Revision	P01
Checked	HP	Date - 05/08/2022	Application Document No.	TR010032/APP/6.2		
Approved	SK	Date - 05/08/2022	Drawing number	HE540039-CJV-ELS-SZP_ZZ000000_Z-DR-LV-00292A		



Rev	Status	Rev. Date	Purpose of revision	Drawn	Chck'd	Apprv'd
P01	S8	05/08/2022	First Issued	BB	HP	SK

For location see Figure 7.16 - Visual Effects Drawing with Representative Viewpoint and Photomontage Locations

Camera: Canon EOS 6D MkII
 Lens: Canon EF 50mm f/1.8 STM
 Equipment: Manfrotto MA 454 Micro Positioning Plate
 Manfrotto SBH-100 Ball Head

Winter Viewpoint:
 Date and Time: S-13
 05/03/2019 15:48

Visualisation Type: Type 3
 Projection Type: Cylindrical
 Enlargement Factor: 1.5
 Horizontal FOV: 56.5°

FL, Max Aperture: 50mm, 1.75
 Tripod Height: 1.65m
 Viewpoint Ground Height: 115.4m AOD
 Viewpoint Grid Reference: 568282E, 169684N

Distance to Order Limits: 0m
 View Direction (Centre of View): SSW
 GPS Accuracy: 5m

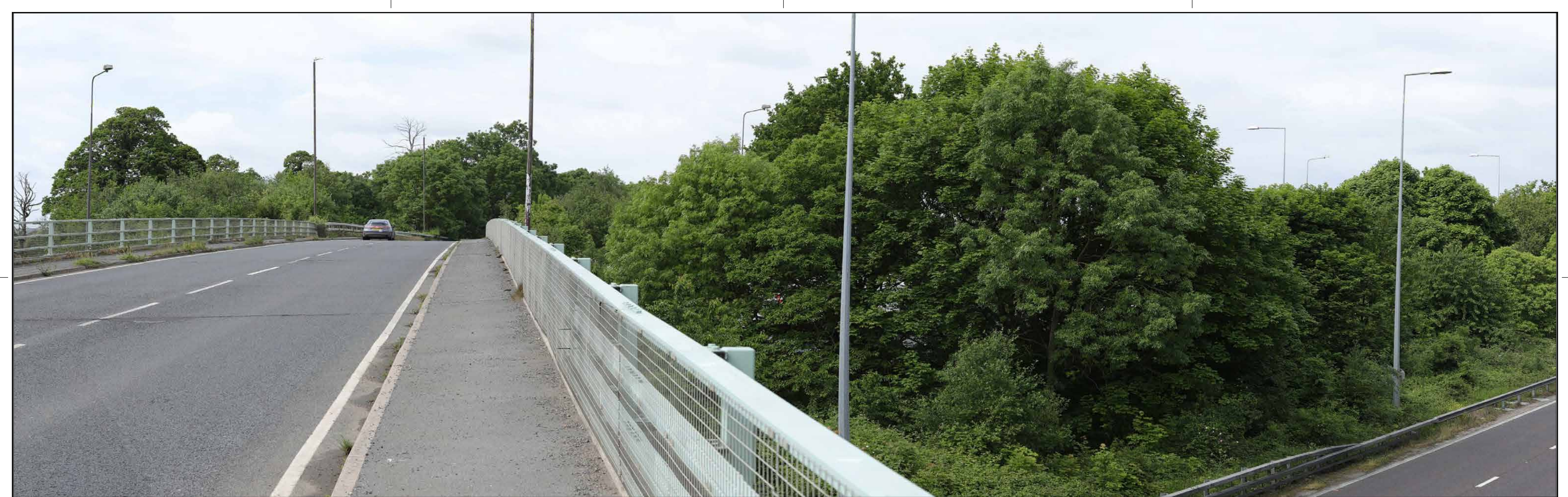


Client
LOWER THAMES CROSSING
 5th Floor Beaufort House
 15 St Botolph Street
 London EC3A 7DT

Project
 LOWER THAMES CROSSING

Drawing title
 Figure 7.19
 Photomontage - Viewpoint S-13
 Winter Year 1
 Sheet 2 of 4

Drawn	BB	Date - 05/08/2022	Status	Revision
Checked	HP	Date - 05/08/2022	S8	P01
Approved	SK	Date - 05/08/2022	Application Document No. TR010032/APP/6.2	
Drawing number		HE540039-CJV-ELS-SZP_ZZ000000_Z-DR-LV-00292		



Rev	Status	Rev. Date	Purpose of revision	Drawn	Chck'd	Apprv'd
P01	S8	05/08/2022	First Issued	BB	HP	SK

For location see Figure 7.16 - Visual Effects Drawing with Representative Viewpoint and Photomontage Locations

Camera: Canon EOS 6D MkII
 Lens: Canon EF 50mm f/1.8 STM
 Equipment: Manfrotto MA 454 Micro Positioning Plate
 Manfrotto SBH-100 Ball Head

Summer Viewpoint:
 Date and Time: S-13
 30/05/2019 10:21

Visualisation Type: Type 3
 Projection Type: Cylindrical
 Enlargement Factor: 1.5
 Horizontal FOV: 56.5°

FL, Max Aperture: 50mm, 1.75
 Tripod Height: 1.65m
 Viewpoint Ground Height: 115.4m AOD
 Viewpoint Grid Reference: 568282E, 169684N

Distance to Order Limits: 0m
 View Direction (Centre of View): SSW
 GPS Accuracy: 5m



LOWER THAMES CROSSING
 5th Floor Beaufort House
 15 St Botolph Street
 London EC3A 7DT

Project: LOWER THAMES CROSSING
 Drawing title: Figure 7.19
 Baseline Photography - Viewpoint S-13
 Summer Year 15
 Sheet 3 of 4

Drawn	BB	Date - 05/08/2022	Status	Revision
Checked	HP	Date - 05/08/2022	S8	P01
Approved	SK	Date - 05/08/2022	Application Document No. TR010032/APP/6.2	
Drawing number HE540039-CJV-ELS-SZP_ZZ000000_Z-DR-LV-00293A				



For location see Figure 7.16 - Visual Effects Drawing with Representative Viewpoint and Photomontage Locations

Summer Viewpoint:
Date and Time: S-13
30/05/2019 10:21

Camera: Canon EOS 6D MkII
Lens: Canon EF 50mm f/1.8 STM
Equipment: Manfrotto MA 454 Micro Positioning Plate
Manfrotto SBH-100 Ball Head

Visualisation Type: Type 3
Projection Type: Cylindrical
Enlargement Factor: 1.5
Horizontal FOV: 56.5°

FL, Max Aperture: 50mm, 1.75
Tripod Height: 1.65m
Viewpoint Ground Height: 115.4m AOD
Viewpoint Grid Reference: 568282E, 169684N

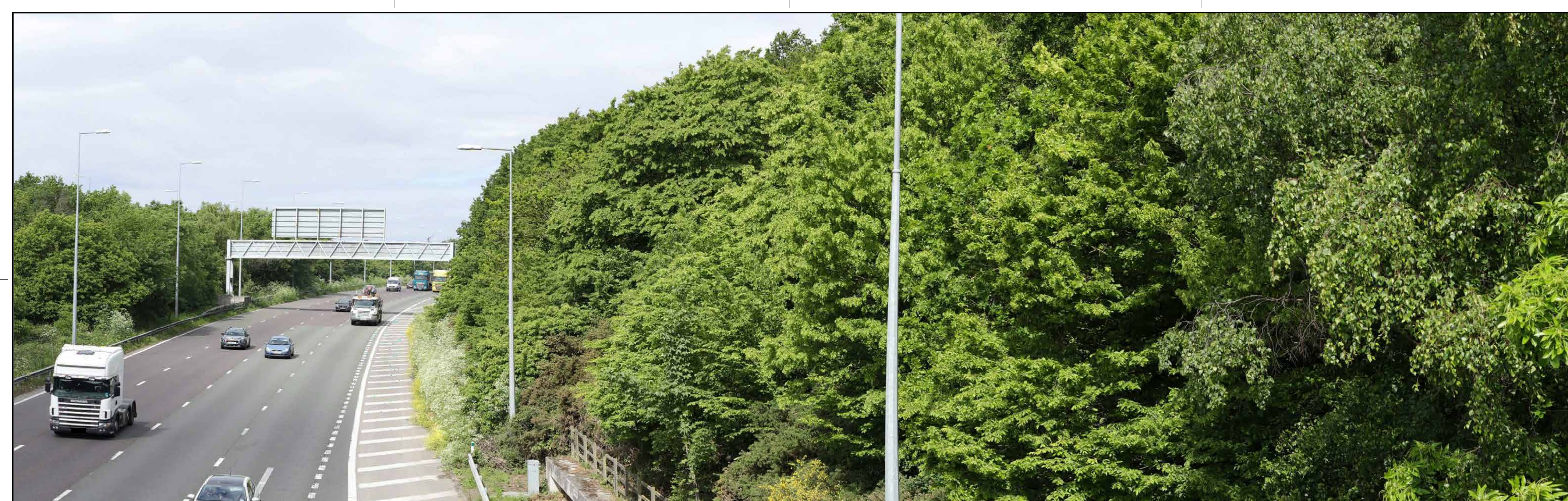
Distance to Order Limits: 0m
View Direction (Centre of View): SSW
GPS Accuracy: 5m



LOWER THAMES CROSSING
5th Floor Beaufort House
15 St Botolph Street
London EC3A 7DT

Project: LOWER THAMES CROSSING
Drawing title: Figure 7.19
Photomontage - Viewpoint S-13
Summer Year 15
Sheet 3 of 4

Drawn	BB	Date - 05/08/2022	Status	Revision
Checked	HP	Date - 05/08/2022	S8	P01
Approved	SK	Date - 05/08/2022	Application Document No. TR010032/APP/6.2	
Drawing number		HE540039-CJV-ELS-SZP_ZZ000000_Z-DR-LV-00293		



For location see Figure 7.16 - Visual Effects Drawing with Representative Viewpoint and Photomontage Locations

Summer Viewpoint: S-13
Date and Time: 30/05/2019 10:21

Camera: Canon EOS 6D MkII
Lens: Canon EF 50mm f/1.8 STM
Equipment: Manfrotto MA 454 Micro Positioning Plate
Manfrotto SBH-100 Ball Head

Visualisation Type: Type 3
Projection Type: Cylindrical
Enlargement Factor: 1.5
Horizontal FOV: 56.5°

FL, Max Aperture: 50mm, 1.75
Tripod Height: 1.65m
Viewpoint Ground Height: 115.4m AOD
Viewpoint Grid Reference: 568282E, 169684N
Distance to Order Limits: 0m
View Direction (Centre of View): SSW
GPS Accuracy: 5m

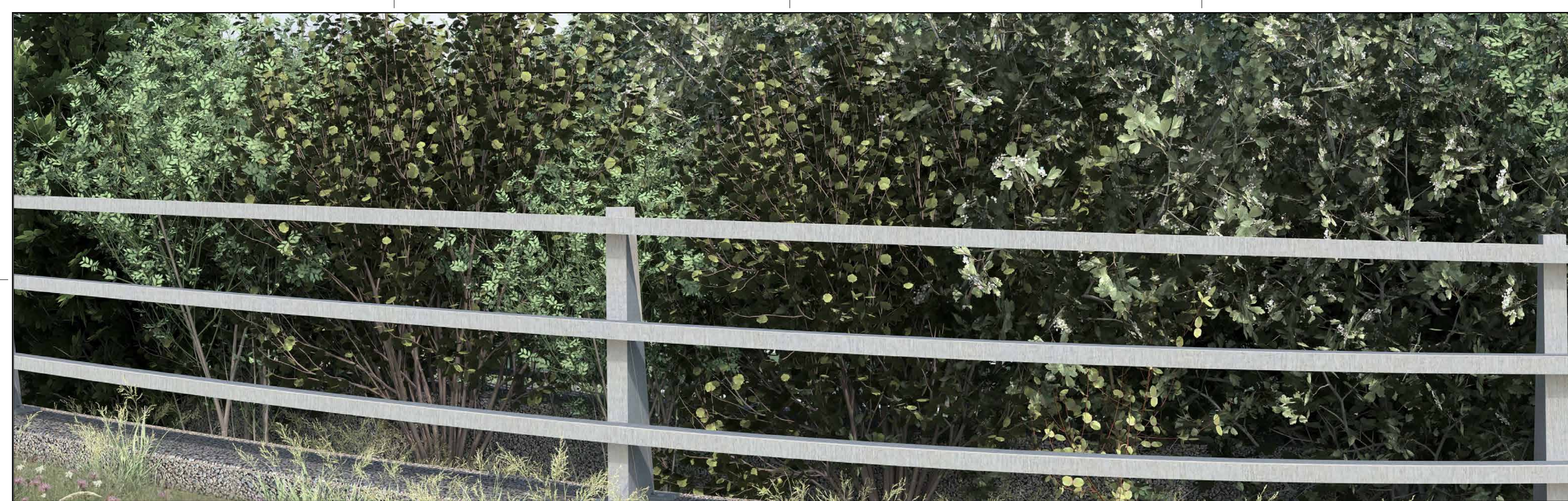


LOWER THAMES CROSSING
5th Floor Beaufort House
15 St Botolph Street
London EC3A 7DT

Project: LOWER THAMES CROSSING
Drawing title: Figure 7.19
Baseline Photography - Viewpoint S-13
Summer Year 15
Sheet 4 of 4

Drawn	BB	Date - 05/08/2022	Status	Revision
Checked	HP	Date - 05/08/2022	S8	P01
Approved	SK	Date - 05/08/2022	Application Document No. TR010032/APP/6.2	
Drawing number HE540039-CJV-ELS-SZP_ZZ000000_Z-DR-LV-00294A				

P01	S8	05/08/2022	First Issued	BB	HP	SK
Rev	Status	Rev. Date	Purpose of revision	Drawn	Chck'd	Apprv'd



P01	S8	05/08/2022	First Issued	BB	HP	SK
Rev	Status	Rev. Date	Purpose of revision	Drawn	Chck'd	Apprv'd

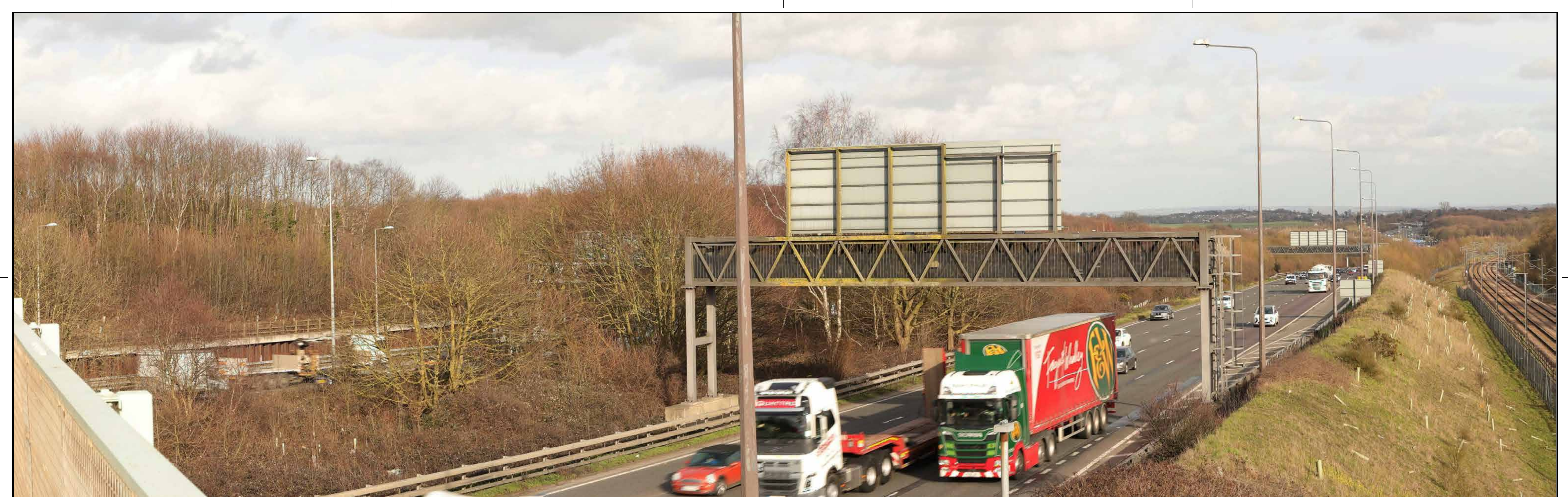
For location see Figure 7.16 - Visual Effects Drawing with Representative Viewpoint and Photomontage Locations		Summer Viewpoint:	S-13				
		Date and Time:	30/05/2019 10:21				
Camera:	Canon EOS 6D MkII	Visualisation Type:	Type 3	FL, Max Aperture:	50mm, 1.75	Distance to Order Limits:	0m
Lens:	Canon EF 50mm f/1.8 STM	Projection Type:	Cylindrical	Tripod Height:	1.65m	View Direction	SSW
Equipment:	Manfrotto MA 454 Micro Positioning Plate	Enlargement Factor:	1.5	Viewpoint Ground Height:	115.4m AOD	(Centre of View):	
	Manfrotto SBH-100 Ball Head	Horizontal FOV:	56.5°	Viewpoint Grid Reference:	568282E, 169684N	GPS Accuracy:	5m



Client
LOWER THAMES CROSSING
 5th Floor Beaufort House
 15 St Botolph Street
 London EC3A 7DT

Project
 LOWER THAMES CROSSING
Drawing title
 Figure 7.19
 Photomontage - Viewpoint S-13
 Summer Year 15
 Sheet 4 of 4

Drawn	BB	Date - 05/08/2022	Status	S8	Revision	P01
Checked	HP	Date - 05/08/2022				
Approved	SK	Date - 05/08/2022				
Drawing number			HE540039-CJV-ELS-SZP_ZZ000000_Z-DR-LV-00294			
Application Document No. TR010032/APP/6.2						



P01	S8	05/08/2022	First Issued	BB	HP	SK
Rev	Status	Rev. Date	Purpose of revision	Drawn	Chck'd	Apprv'd

For location see Figure 7.16 - Visual Effects Drawing with Representative Viewpoint and Photomontage Locations		Winter Viewpoint: Date and Time:	S-14 05/03/2019 15:17	Visualisation Type:	Type 3	FL, Max Aperture:	50mm, 1.75	Distance to Order Limits:	0m
Camera:	Canon EOS 6D MkII	Projection Type:	Cylindrical	Tripod Height:	1.5m	View Direction	(Centre of View): NE	View Direction	NE
Lens:	Canon EF 50mm f/1.8 STM	Enlargement Factor:	1.5	Viewpoint Ground Height:	111.3m AOD	Viewpoint Ground Reference:	568232E, 169606N	GPS Accuracy:	5m
Equipment:	Manfrotto MA 454 Micro Positioning Plate Manfrotto SBH-100 Ball Head	Horizontal FOV:	56.5°						

Client

LOWER THAMES CROSSING
5th Floor Beaufort House
15 St Botolph Street
London EC3A 7DT

Project LOWER THAMES CROSSING
Drawing title Figure 7.19
Baseline Photography - Viewpoint S-14
Winter Year 1
Sheet 1 of 2

Drawn	BB	Date - 05/08/2022	Status	S8	Revision	P01
Checked	HP	Date - 05/08/2022	Application Document No.	TR010032/APP/6.2		
Approved	SK	Date - 05/08/2022	Drawing number	HE540039-CJV-ELS-SZP_ZZ000000_Z-DR-LV-00295A		



P01	S8	05/08/2022	First Issued	BB	HP	SK
Rev	Status	Rev. Date	Purpose of revision	Drawn	Chck'd	Apprv'd

For location see Figure 7.16 - Visual Effects Drawing with Representative Viewpoint and Photomontage Locations		Winter Viewpoint: Date and Time:	S-14 05/03/2019 15:17	Visualisation Type:	Type 3	FL, Max Aperture:	50mm, 1.75	Distance to Order Limits:	0m
Camera:	Canon EOS 6D MkII	Projection Type:	Cylindrical	Tripod Height:	1.5m	Viewpoint Ground Height:	111.3m AOD	View Direction (Centre of View):	NE
Lens:	Canon EF 50mm f/1.8 STM	Enlargement Factor:	1.5	Viewpoint Grid Reference:	568232E, 169606N	GPS Accuracy:	5m		
Equipment:	Manfrotto MA 454 Micro Positioning Plate Manfrotto SBH-100 Ball Head	Horizontal FOV:	56.5°						

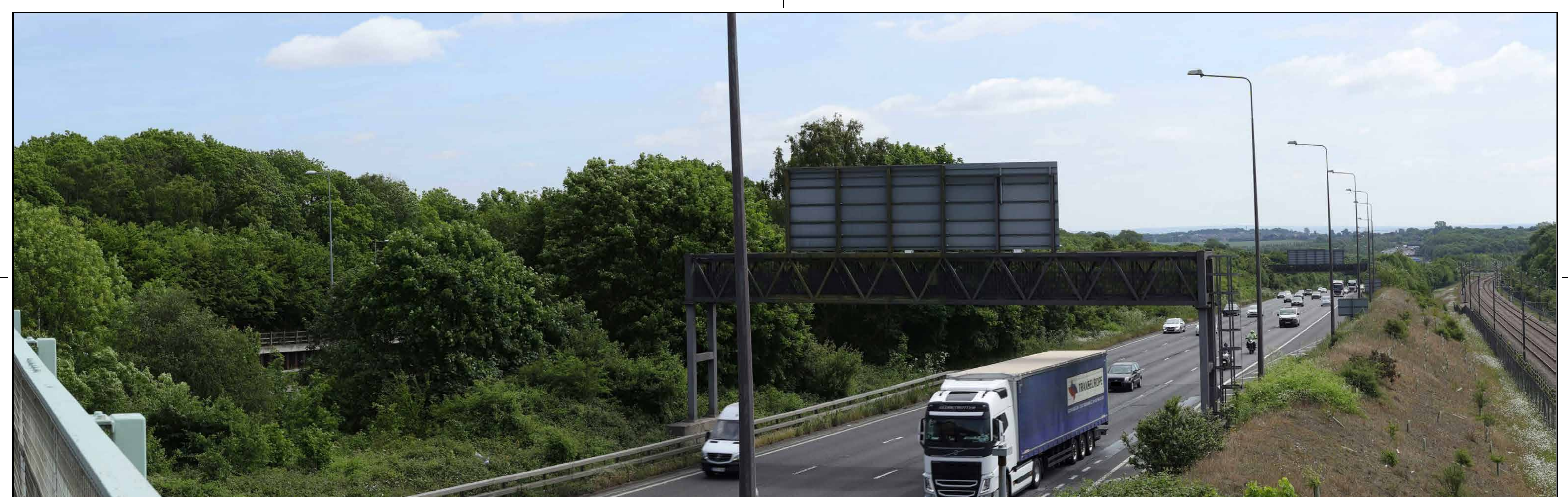
Client



LOWER THAMES CROSSING
5th Floor Beaufort House
15 St Botolph Street
London EC3A 7DT

Project	LOWER THAMES CROSSING
Drawing title	Figure 7.19 Photomontage - Viewpoint S-14 Winter Year 1 Sheet 1 of 2

Drawn	BB	Date	- 05/08/2022	Status	S8	Revision	P01
Checked	HP	Date	- 05/08/2022				
Approved	SK	Date	- 05/08/2022	Application Document No. TR010032/APP/6.2			
Drawing number		HE540039-CJV-ELS-SZP_ZZ000000_Z-DR-LV-00295					



P01	S8	05/08/2022	First Issued	BB	HP	SK
Rev	Status	Rev. Date	Purpose of revision	Drawn	Chck'd	Apprv'd

For location see Figure 7.16 - Visual Effects Drawing with Representative Viewpoint and Photomontage Locations		Summer Viewpoint:	S-14				
		Date and Time:	30/05/2019 10:37				
Camera:	Canon EOS 6D MkII	Visualisation Type:	Type 3	FL, Max Aperture:	50mm, 1.75	Distance to Order Limits:	0m
Lens:	Canon EF 50mm f/1.8 STM	Projection Type:	Cylindrical	Tripod Height:	1.5m	View Direction:	NE
Equipment:	Manfrotto MA 454 Micro Positioning Plate	Enlargement Factor:	1.5	Viewpoint Ground Height:	111.3m AOD	(Centre of View):	NE
	Manfrotto SBH-100 Ball Head	Horizontal FOV:	56.5°	Viewpoint Grid Reference:	568232E, 169606N	GPS Accuracy:	5m



LOWER THAMES CROSSING
 5th Floor Beaufort House
 15 St Botolph Street
 London EC3A 7DT

Project	LOWER THAMES CROSSING
Drawing title	Figure 7.19 Baseline Photography - Viewpoint S-14 Summer Year 15 Sheet 2 of 2

Drawn	BB	Date - 05/08/2022	Status	Revision
Checked	HP	Date - 05/08/2022	S8	P01
Approved	SK	Date - 05/08/2022	Application Document No. TR010032/APP/6.2	
Drawing number HE540039-CJV-ELS-SZP_ZZ000000_Z-DR-LV-00296A				



For location see Figure 7.16 - Visual Effects Drawing with Representative Viewpoint and Photomontage Locations

Summer Viewpoint: S-14
Date and Time: 30/05/2019 10:37

Camera: Canon EOS 6D MkII
Lens: Canon EF 50mm f/1.8 STM
Equipment: Manfrotto MA 454 Micro Positioning Plate
Manfrotto SBH-100 Ball Head

Visualisation Type: Type 3
Projection Type: Cylindrical
Enlargement Factor: 1.5
Horizontal FOV: 56.5°

FL, Max Aperture: 50mm, 1.75
Tripod Height: 1.5m
Viewpoint Ground Height: 111.3m AOD
Viewpoint Grid Reference: 568232E, 169606N

Distance to Order Limits: 0m
View Direction (Centre of View): NE
GPS Accuracy: 5m



LOWER THAMES CROSSING
5th Floor Beaufort House
15 St Botolph Street
London EC3A 7DT

Project: LOWER THAMES CROSSING
Drawing title: Figure 7.19
Photomontage - Viewpoint S-14
Summer Year 15
Sheet 2 of 2

Drawn	BB	Date - 05/08/2022	Status	Revision
Checked	HP	Date - 05/08/2022	S8	P01
Approved	SK	Date - 05/08/2022	Application Document No. TR010032/APP/6.2	
Drawing number		HE540039-CJV-ELS-SZP_ZZ000000_Z-DR-LV-00296		

P01	S8	05/08/2022	First Issued	BB	HP	SK
Rev	Status	Rev. Date	Purpose of revision	Drawn	Chck'd	Apprv'd



Rev	Status	Rev. Date	Purpose of revision	Drawn	Chck'd	Apprv'd
P01	S8	05/08/2022	First Issued	BB	HP	SK

For location see Figure 7.16 - Visual Effects Drawing with Representative Viewpoint and Photomontage Locations

Camera: Canon EOS 6D MkII
 Lens: Canon EF 50mm f/1.8 STM
 Equipment: Manfrotto MA 454 Micro Positioning Plate
 Manfrotto SBH-100 Ball Head

Winter Viewpoint: S-17
 Date and Time: 07/03/2019 12:09

Visualisation Type: Type 3
 Projection Type: Cylindrical
 Enlargement Factor: 1.5
 Horizontal FOV: 56.5°

FL, Max Aperture: 50mm, 1.75
 Tripod Height: 1.5m
 Viewpoint Ground Height: 89.9m AOD
 Viewpoint Grid Reference: 567389E, 169920N

Distance to Order Limits: 0m
 View Direction (Centre of View): S
 GPS Accuracy: 5m



LOWER THAMES CROSSING
 5th Floor Beaufort House
 15 St Botolph Street
 London EC3A 7DT

Project: LOWER THAMES CROSSING
 Drawing title: Figure 7.19
 Baseline Photography - Viewpoint S-17
 Winter Year 1
 Sheet 1 of 4

Drawn	BB	Date - 05/08/2022	Status	Revision
Checked	HP	Date - 05/08/2022	S8	P01
Approved	SK	Date - 05/08/2022	Application Document No. TR010032/APP/6.2	
Drawing number HE540039-CJV-ELS-SZP_ZZ000000_Z-DR-LV-00297A				



P01	S8	05/08/2022	First Issued	BB	HP	SK
Rev	Status	Rev. Date	Purpose of revision	Drawn	Chck'd	Apprv'd

For location see Figure 7.16 - Visual Effects Drawing with Representative Viewpoint and Photomontage Locations

Camera: Canon EOS 6D MkII
 Lens: Canon EF 50mm f/1.8 STM
 Equipment: Manfrotto MA 454 Micro Positioning Plate
 Manfrotto SBH-100 Ball Head

Visualisation Type: Type 3
 Projection Type: Cylindrical
 Enlargement Factor: 1.5
 Horizontal FOV: 56.5°

Winter Viewpoint: S-17
 Date and Time: 07/03/2019 12:09

FL, Max Aperture: 50mm, 1.75
 Tripod Height: 1.5m
 Viewpoint Ground Height: 89.9m AOD
 Viewpoint Grid Reference: 567389E, 169920N

Distance to Order Limits: 0m
 View Direction (Centre of View): S
 GPS Accuracy: 5m



LOWER THAMES CROSSING
 5th Floor Beaufort House
 15 St Botolph Street
 London EC3A 7DT

Project: LOWER THAMES CROSSING
 Drawing title: Figure 7.19
 Photomontage - Viewpoint S-17
 Winter Year 1
 Sheet 1 of 4

Drawn	BB	Date - 05/08/2022	Status	Revision
Checked	HP	Date - 05/08/2022	S8	P01
Approved	SK	Date - 05/08/2022	Application Document No. TR010032/APP/6.2	
Drawing number HE540039-CJV-ELS-SZP_ZZ000000_Z-DR-LV-00297				



P01	S8	05/08/2022	First Issued	BB	HP	SK
Rev	Status	Rev. Date	Purpose of revision	Drawn	Chck'd	Apprv'd

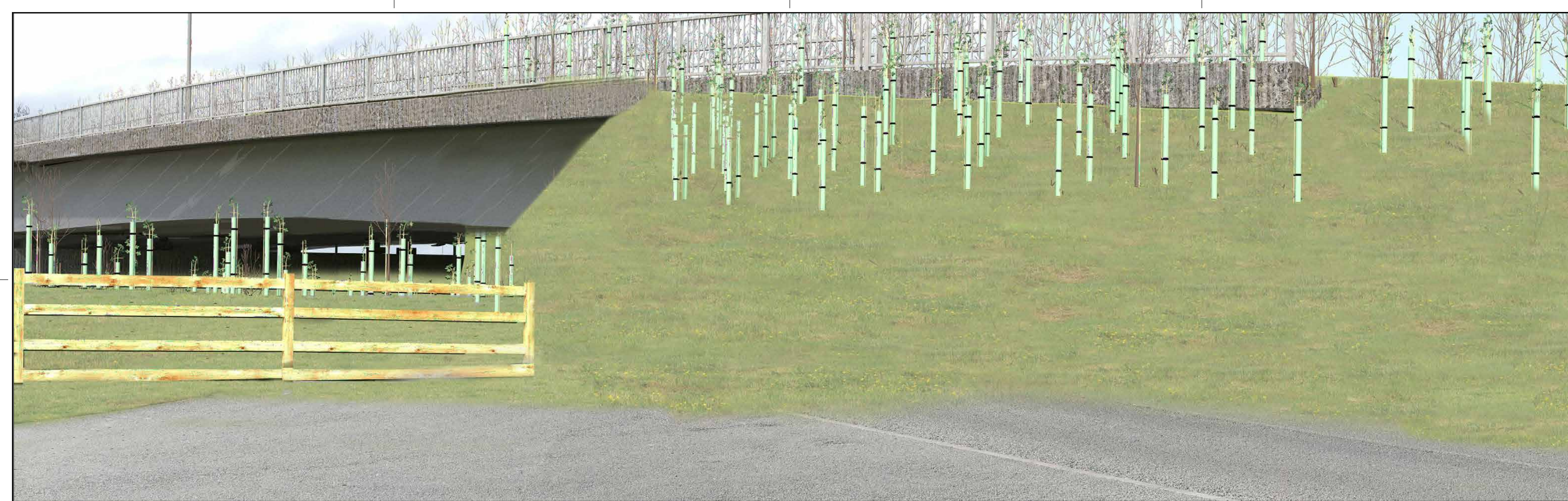
For location see Figure 7.16 - Visual Effects Drawing with Representative Viewpoint and Photomontage Locations		Winter Viewpoint:	S-17				
		Date and Time:	07/03/2019 12:09				
Camera:	Canon EOS 6D MkII	Visualisation Type:	Type 3	FL, Max Aperture:	50mm, 1.75	Distance to Order Limits:	0m
Lens:	Canon EF 50mm f/1.8 STM	Projection Type:	Cylindrical	Tripod Height:	1.5m	View Direction	S
Equipment:	Manfrotto MA 454 Micro Positioning Plate	Enlargement Factor:	1.5	Viewpoint Ground Height:	89.9m AOD	(Centre of View):	S
	Manfrotto SBH-100 Ball Head	Horizontal FOV:	56.5°	Viewpoint Grid Reference:	567389E, 169920N	GPS Accuracy:	5m



LOWER THAMES CROSSING
 5th Floor Beaufort House
 15 St Botolph Street
 London EC3A 7DT

Project	LOWER THAMES CROSSING
Drawing title	Figure 7.19 Baseline Photography - Viewpoint S-17 Winter Year 1 Sheet 2 of 4

Drawn	BB	Date - 05/08/2022	Status	S8	Revision	P01
Checked	HP	Date - 05/08/2022				
Approved	SK	Date - 05/08/2022	Application Document No. TR010032/APP/6.2			
Drawing number		HE540039-CJV-ELS-SZP_ZZ000000_Z-DR-LV-00298A				



P01	S8	05/08/2022	First Issued	BB	HP	SK
Rev	Status	Rev. Date	Purpose of revision	Drawn	Chck'd	Apprv'd

For location see Figure 7.16 - Visual Effects Drawing with Representative Viewpoint and Photomontage Locations

Camera: Canon EOS 6D MkII
 Lens: Canon EF 50mm f/1.8 STM
 Equipment: Manfrotto MA 454 Micro Positioning Plate
 Manfrotto SBH-100 Ball Head

Winter Viewpoint:
 Date and Time: S-17
 07/03/2019 12:09

Visualisation Type: Type 3
 Projection Type: Cylindrical
 Enlargement Factor: 1.5
 Horizontal FOV: 56.5°

FL, Max Aperture: 50mm, 1.75
 Tripod Height: 1.5m
 Viewpoint Ground Height: 89.9m AOD
 Viewpoint Grid Reference: 567389E, 169920N

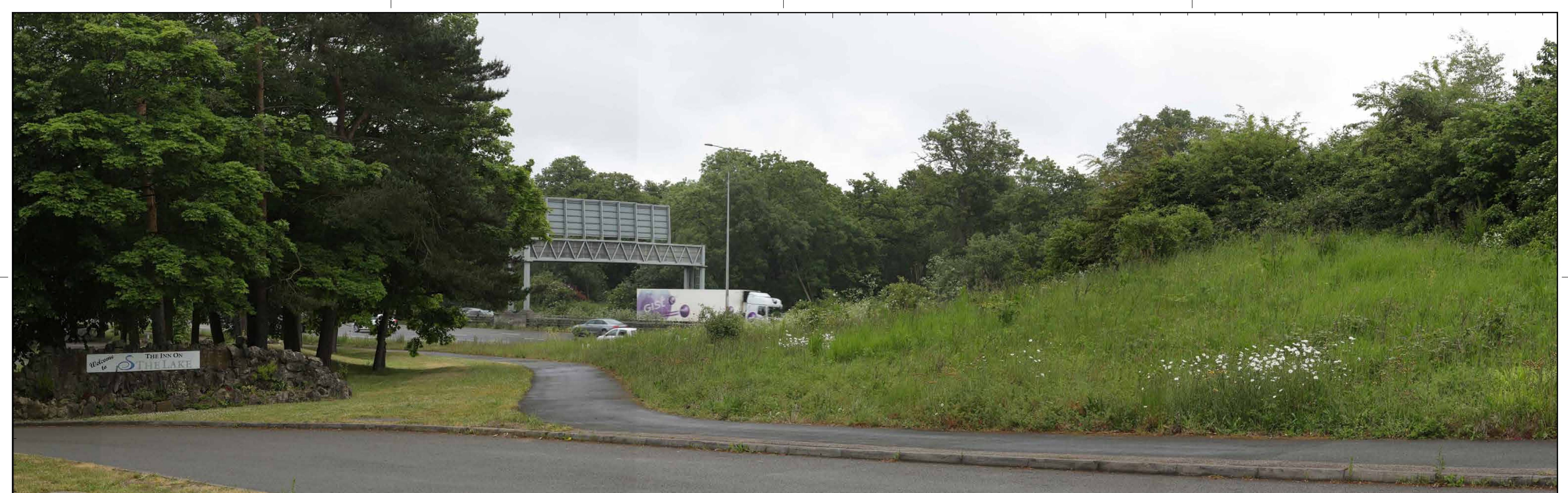
Distance to Order Limits: 0m
 View Direction (Centre of View): S
 GPS Accuracy: 5m



LOWER THAMES CROSSING
 5th Floor Beaufort House
 15 St Botolph Street
 London EC3A 7DT

Project: LOWER THAMES CROSSING
 Drawing title: Figure 7.19
 Photomontage - Viewpoint S-17
 Winter Year 1
 Sheet 2 of 4

Drawn	BB	Date - 05/08/2022	Status	Revision
Checked	HP	Date - 05/08/2022	S8	P01
Approved	SK	Date - 05/08/2022	Application Document No. TR010032/APP/6.2	
Drawing number HE540039-CJV-ELS-SZP_ZZ000000_Z-DR-LV-00298				



P01	S8	05/08/2022	First Issued	BB	HP	SK
Rev	Status	Rev. Date	Purpose of revision	Drawn	Chck'd	Apprv'd

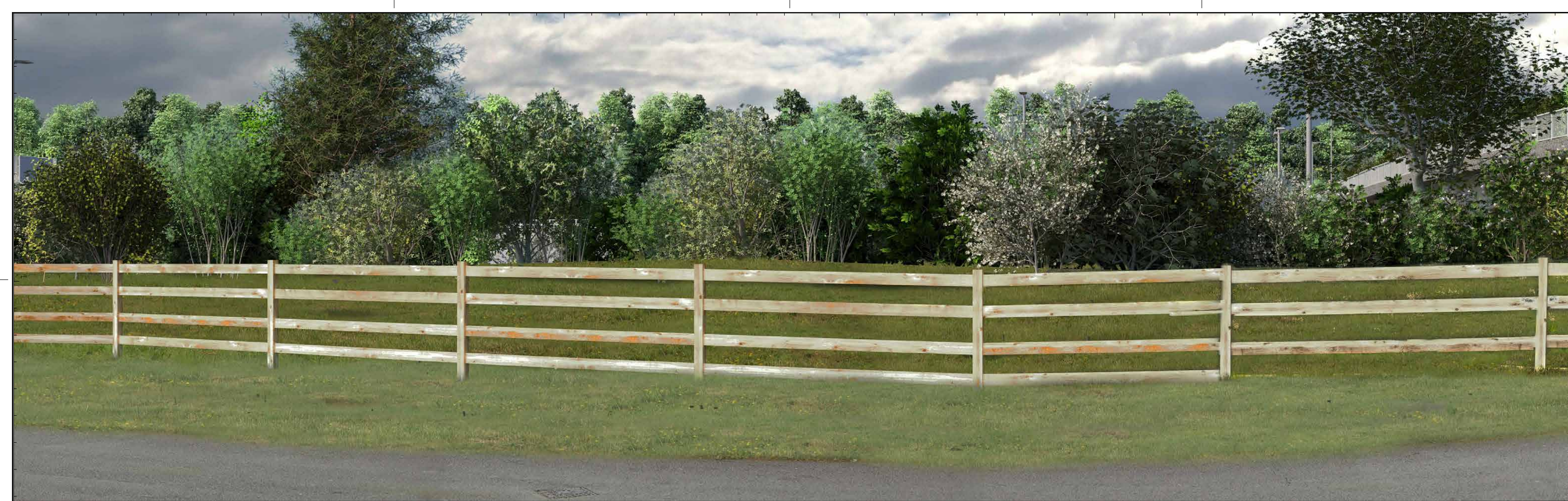
For location see Figure 7.16 - Visual Effects Drawing with Representative Viewpoint and Photomontage Locations		Summer Viewpoint:	S-17				
		Date and Time:	29/05/2019 16:44				
Camera:	Canon EOS 6D MkII	Visualisation Type:	Type 3	FL, Max Aperture:	50mm, 1.75	Distance to Order Limits:	0m
Lens:	Canon EF 50mm f/1.8 STM	Projection Type:	Cylindrical	Tripod Height:	1.5m	View Direction:	S
Equipment:	Manfrotto MA 454 Micro Positioning Plate	Enlargement Factor:	1.5	Viewpoint Ground Height:	89.9m AOD	(Centre of View):	S
	Manfrotto SBH-100 Ball Head	Horizontal FOV:	56.5°	Viewpoint Grid Reference:	567389E, 169920N	GPS Accuracy:	5m



LOWER THAMES CROSSING
 5th Floor Beaufort House
 15 St Botolph Street
 London EC3A 7DT

Project	LOWER THAMES CROSSING
Drawing title	Figure 7.19 Baseline Photography - Viewpoint S-17 Summer Year 15 Sheet 3 of 4

Drawn	BB	Date - 05/08/2022	Status	S8	Revision	P01
Checked	HP	Date - 05/08/2022				
Approved	SK	Date - 05/08/2022	Application Document No. TR010032/APP/6.2			
Drawing number		HE540039-CJV-ELS-SZP_ZZ000000_Z-DR-LV-00299A				



P01	S8	05/08/2022	First Issued	BB	HP	SK
Rev	Status	Rev. Date	Purpose of revision	Drawn	Chck'd	Apprv'd

For location see Figure 7.16 - Visual Effects Drawing with Representative Viewpoint and Photomontage Locations		Summer Viewpoint:	S-17				
		Date and Time:	29/05/2019 16:44				
Camera:	Canon EOS 6D MkII	Visualisation Type:	Type 3	FL, Max Aperture:	50mm, 1.75	Distance to Order Limits:	0m
Lens:	Canon EF 50mm f/1.8 STM	Projection Type:	Cylindrical	Tripod Height:	1.5m	View Direction	S
Equipment:	Manfrotto MA 454 Micro Positioning Plate	Enlargement Factor:	1.5	Viewpoint Ground Height:	89.9m AOD	(Centre of View):	S
	Manfrotto SBH-100 Ball Head	Horizontal FOV:	56.5°	Viewpoint Grid Reference:	567389E, 169920N	GPS Accuracy:	5m



Client
LOWER THAMES CROSSING
 5th Floor Beaufort House
 15 St Botolph Street
 London EC3A 7DT

Project	LOWER THAMES CROSSING
Drawing title	Figure 7.19 Photomontage - Viewpoint S-17 Summer Year 15 Sheet 3 of 4

Drawn	BB	Date - 05/08/2022	Status	S8	Revision	P01
Checked	HP	Date - 05/08/2022				
Approved	SK	Date - 05/08/2022	Application Document No. TR010032/APP/6.2			
Drawing number		HE540039-CJV-ELS-SZP_ZZ000000_Z-DR-LV-00299				



P01	S8	05/08/2022	First Issued	BB	HP	SK
Rev	Status	Rev. Date	Purpose of revision	Drawn	Chck'd	Apprv'd

For location see Figure 7.16 - Visual Effects Drawing with Representative Viewpoint and Photomontage Locations		Summer Viewpoint:	S-17				
		Date and Time:	29/05/2019 16:44				
Camera:	Canon EOS 6D MkII	Visualisation Type:	Type 3	FL, Max Aperture:	50mm, 1.75	Distance to Order Limits:	0m
Lens:	Canon EF 50mm f/1.8 STM	Projection Type:	Cylindrical	Tripod Height:	1.5m	View Direction:	S
Equipment:	Manfrotto MA 454 Micro Positioning Plate	Enlargement Factor:	1.5	Viewpoint Ground Height:	89.9m AOD	(Centre of View):	S
	Manfrotto SBH-100 Ball Head	Horizontal FOV:	56.5°	Viewpoint Grid Reference:	567389E, 169920N	GPS Accuracy:	5m



LOWER THAMES CROSSING
 5th Floor Beaufort House
 15 St Botolph Street
 London EC3A 7DT

Project	LOWER THAMES CROSSING
Drawing title	Figure 7.19 Baseline Photography - Viewpoint S-17 Summer Year 15 Sheet 4 of 4

Drawn	BB	Date - 05/08/2022	Status	Revision
Checked	HP	Date - 05/08/2022	S8	P01
Approved	SK	Date - 05/08/2022	Application Document No. TR010032/APP/6.2	
Drawing number		HE540039-CJV-ELS-SZP_ZZ000000_Z-DR-LV-00300A		



For location see Figure 7.16 - Visual Effects Drawing with Representative Viewpoint and Photomontage Locations

Summer Viewpoint: S-17
Date and Time: 29/05/2019 16:44

Camera: Canon EOS 6D MkII
Lens: Canon EF 50mm f/1.8 STM
Equipment: Manfrotto MA 454 Micro Positioning Plate
Manfrotto SBH-100 Ball Head

Visualisation Type: Type 3
Projection Type: Cylindrical
Enlargement Factor: 1.5
Horizontal FOV: 56.5°

FL, Max Aperture: 50mm, 1.75
Tripod Height: 1.5m
Viewpoint Ground Height: 89.9m AOD
Viewpoint Grid Reference: 567389E, 169920N

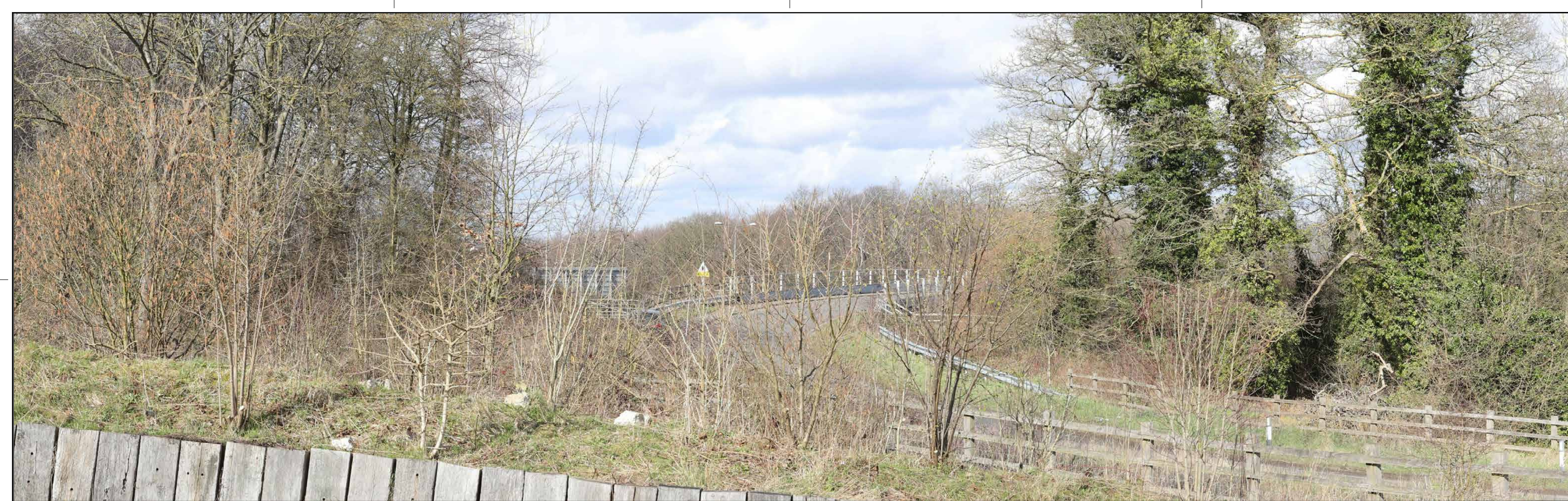
Distance to Order Limits: 0m
View Direction (Centre of View): S
GPS Accuracy: 5m



LOWER THAMES CROSSING
5th Floor Beaufort House
15 St Botolph Street
London EC3A 7DT

Project: LOWER THAMES CROSSING
Drawing title: Figure 7.19
Photomontage - Viewpoint S-17
Summer Year 15
Sheet 4 of 4

Drawn	BB	Date - 05/08/2022	Status	Revision
Checked	HP	Date - 05/08/2022	S8	P01
Approved	SK	Date - 05/08/2022	Application Document No. TR010032/APP/6.2	
Drawing number		HE540039-CJV-ELS-SZP_ZZ000000_Z-DR-LV-00300		



Rev	Status	Rev. Date	Purpose of revision	Drawn	Chck'd	Apprv'd
P01	S8	05/08/2022	First Issued	BB	HP	SK

For location see Figure 7.16 - Visual Effects Drawing with Representative Viewpoint and Photomontage Locations

Camera: Canon EOS 6D MkII
 Lens: Canon EF 50mm f/1.8 STM
 Equipment: Manfrotto MA 454 Micro Positioning Plate
 Manfrotto SBH-100 Ball Head

Winter Viewpoint:
 Date and Time: S-18
 07/03/2019 12:20

Visualisation Type: Type 3
 Projection Type: Cylindrical
 Enlargement Factor: 1.5
 Horizontal FOV: 56.5°

FL, Max Aperture: 50mm, 1.75
 Tripod Height: 1.5m
 Viewpoint Ground Height: 99.8m AOD
 Viewpoint Grid Reference: 567405E, 169718N

Distance to Order Limits: 0m
 View Direction (Centre of View): NW
 GPS Accuracy: 5m



LOWER THAMES CROSSING
 5th Floor Beaufort House
 15 St Botolph Street
 London EC3A 7DT

Project: LOWER THAMES CROSSING
 Drawing title: Figure 7.19
 Baseline Photography - Viewpoint S-18
 Winter Year 1
 Sheet 1 of 2

Drawn	BB	Date - 05/08/2022	Status	Revision
Checked	HP	Date - 05/08/2022	S8	P01
Approved	SK	Date - 05/08/2022	Application Document No. TR010032/APP/6.2	
Drawing number		HE540039-CJV-ELS-SZP_ZZ000000_Z-DR-LV-00301A		



P01	S8	05/08/2022	First Issued	BB	HP	SK
Rev	Status	Rev. Date	Purpose of revision	Drawn	Chck'd	Apprv'd

For location see Figure 7.16 - Visual Effects Drawing with Representative Viewpoint and Photomontage Locations

Camera: Canon EOS 6D MkII
 Lens: Canon EF 50mm f/1.8 STM
 Equipment: Manfrotto MA 454 Micro Positioning Plate
 Manfrotto SBH-100 Ball Head

Winter Viewpoint:
 Date and Time: S-18
 07/03/2019 12:20

Visualisation Type: Type 3
 Projection Type: Cylindrical
 Enlargement Factor: 1.5
 Horizontal FOV: 56.5°

FL, Max Aperture: 50mm, 1.75
 Tripod Height: 1.5m
 Viewpoint Ground Height: 99.8m AOD
 Viewpoint Grid Reference: 567405E, 169718N

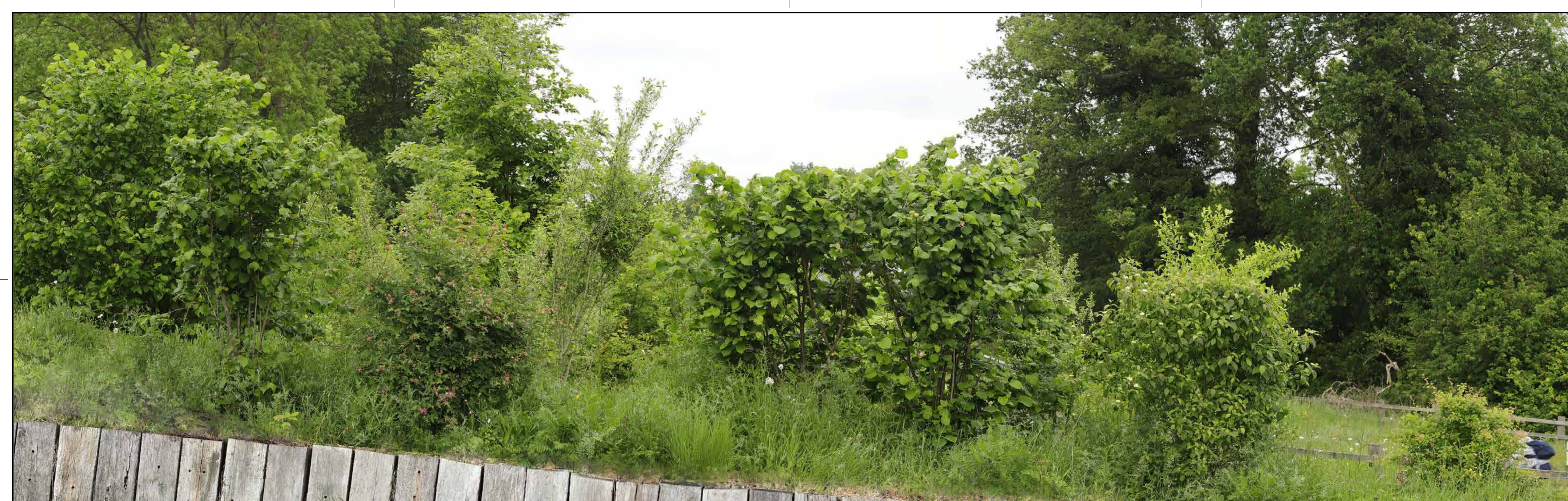
Distance to Order Limits: 0m
 View Direction (Centre of View): NW
 GPS Accuracy: 5m



LOWER THAMES CROSSING
 5th Floor Beaufort House
 15 St Botolph Street
 London EC3A 7DT

Project: LOWER THAMES CROSSING
 Drawing title: Figure 7.19
 Photomontage - Viewpoint S-18
 Winter Year 1
 Sheet 1 of 2

Drawn	BB	Date - 05/08/2022	Status	S8	Revision	P01
Checked	HP	Date - 05/08/2022	Application Document No. TR010032/APP/6.2			
Approved	SK	Date - 05/08/2022	Drawing number			
HE540039-CJV-ELS-SZP_ZZ000000_Z-DR-LV-00301						



Rev	Status	Rev. Date	Purpose of revision	Drawn	Chck'd	Apprv'd
P01	S8	05/08/2022	First Issued	BB	HP	SK

For location see Figure 7.16 - Visual Effects Drawing with Representative Viewpoint and Photomontage Locations

Camera: Canon EOS 6D MkII
 Lens: Canon EF 50mm f/1.8 STM
 Equipment: Manfrotto MA 454 Micro Positioning Plate
 Manfrotto SBH-100 Ball Head

Summer Viewpoint: S-18
 Date and Time: 29/05/2019 16:21

Visualisation Type: Type 3
 Projection Type: Cylindrical
 Enlargement Factor: 1.5
 Horizontal FOV: 56.5°

FL, Max Aperture: 50mm, 1.75
 Tripod Height: 1.5m
 Viewpoint Ground Height: 99.8m AOD
 Viewpoint Grid Reference: 567405E, 169718N

Distance to Order Limits: 0m
 View Direction (Centre of View): NW
 GPS Accuracy: 5m



LOWER THAMES CROSSING
 5th Floor Beaufort House
 15 St Botolph Street
 London EC3A 7DT

Project: LOWER THAMES CROSSING
 Drawing title: Figure 7.19
 Baseline Photography - Viewpoint S-18
 Summer Year 15
 Sheet 2 of 2

Drawn	BB	Date - 05/08/2022	Status	S8	Revision	P01
Checked	HP	Date - 05/08/2022	Application Document No. TR010032/APP/6.2			
Approved	SK	Date - 05/08/2022	Drawing number			
HE540039-CJV-ELS-SZP_ZZ000000_Z-DR-LV-00302A						



P01	S8	05/08/2022	First Issued	BB	HP	SK
Rev	Status	Rev. Date	Purpose of revision	Drawn	Chck'd	Apprv'd

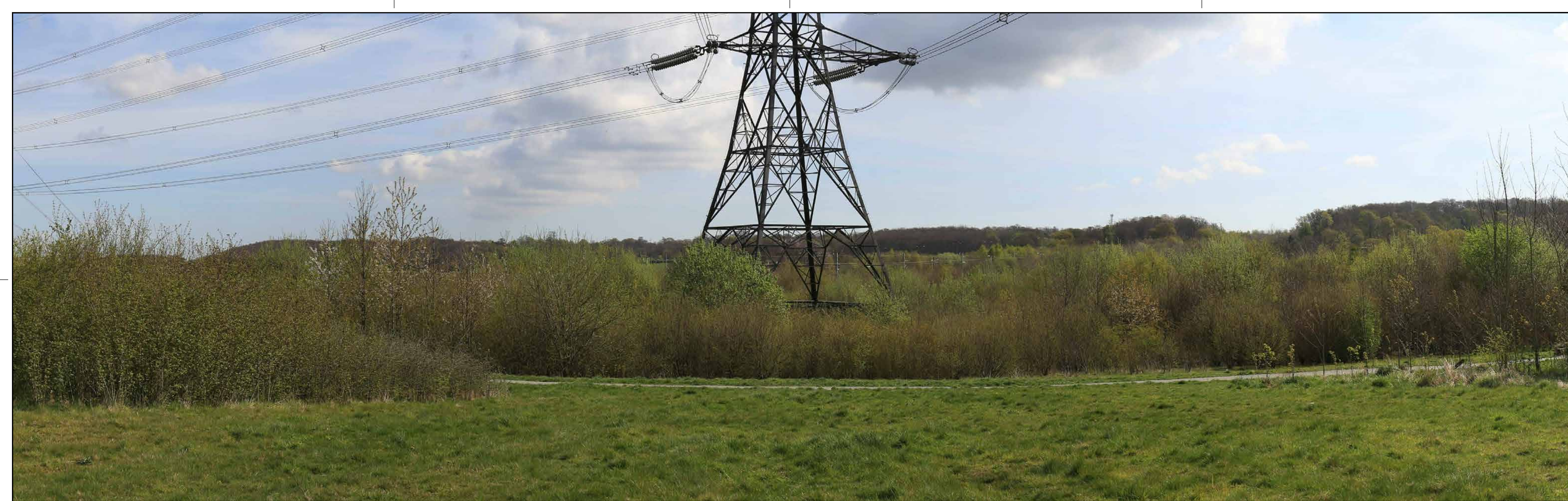
For location see Figure 7.16 - Visual Effects Drawing with Representative Viewpoint and Photomontage Locations		Summer Viewpoint:	S-18				
		Date and Time:	29/05/2019 16:21				
Camera:	Canon EOS 6D MkII	Visualisation Type:	Type 3	FL, Max Aperture:	50mm, 1.75	Distance to Order Limits:	0m
Lens:	Canon EF 50mm f/1.8 STM	Projection Type:	Cylindrical	Tripod Height:	1.5m	View Direction	NW
Equipment:	Manfrotto MA 454 Micro Positioning Plate	Enlargement Factor:	1.5	Viewpoint Ground Height:	99.8m AOD	(Centre of View):	NW
	Manfrotto SBH-100 Ball Head	Horizontal FOV:	56.5°	Viewpoint Grid Reference:	567405E, 169718N	GPS Accuracy:	5m



LOWER THAMES CROSSING
 5th Floor Beaufort House
 15 St Botolph Street
 London EC3A 7DT

Project	LOWER THAMES CROSSING
Drawing title	Figure 7.19 Photomontage - Viewpoint S-18 Summer Year 15 Sheet 2 of 2

Drawn	BB	Date - 05/08/2022	Status	S8	Revision	P01
Checked	HP	Date - 05/08/2022				
Approved	SK	Date - 05/08/2022	Application Document No. TR010032/APP/6.2			
Drawing number		HE540039-CJV-ELS-SZP_ZZ000000_Z-DR-LV-00302				



Rev	Status	Rev. Date	Purpose of revision	Drawn	Chck'd	Apprv'd
P01	S8	05/08/2022	First Issued	BB	HP	SK

For location see Figure 7.16 - Visual Effects Drawing with Representative Viewpoint and Photomontage Locations

Camera: Canon EOS 6D MkII
 Lens: Canon EF 50mm f/1.8 STM
 Equipment: Manfrotto MA 454 Micro Positioning Plate
 Manfrotto SBH-100 Ball Head

Visualisation Type: Type 3
 Projection Type: Cylindrical
 Enlargement Factor: 1.5
 Horizontal FOV: 56.5°

Winter Viewpoint:
 Date and Time: S-20a
 14/04/2022 09:53

FL, Max Aperture: 50mm, 1.75
 Tripod Height: 1.5m
 Viewpoint Ground Height: 85.3m AOD
 Viewpoint Grid Reference: 566264E, 169859N

Distance to Order Limits: 0m
 View Direction (Centre of View): NE
 GPS Accuracy: 5m

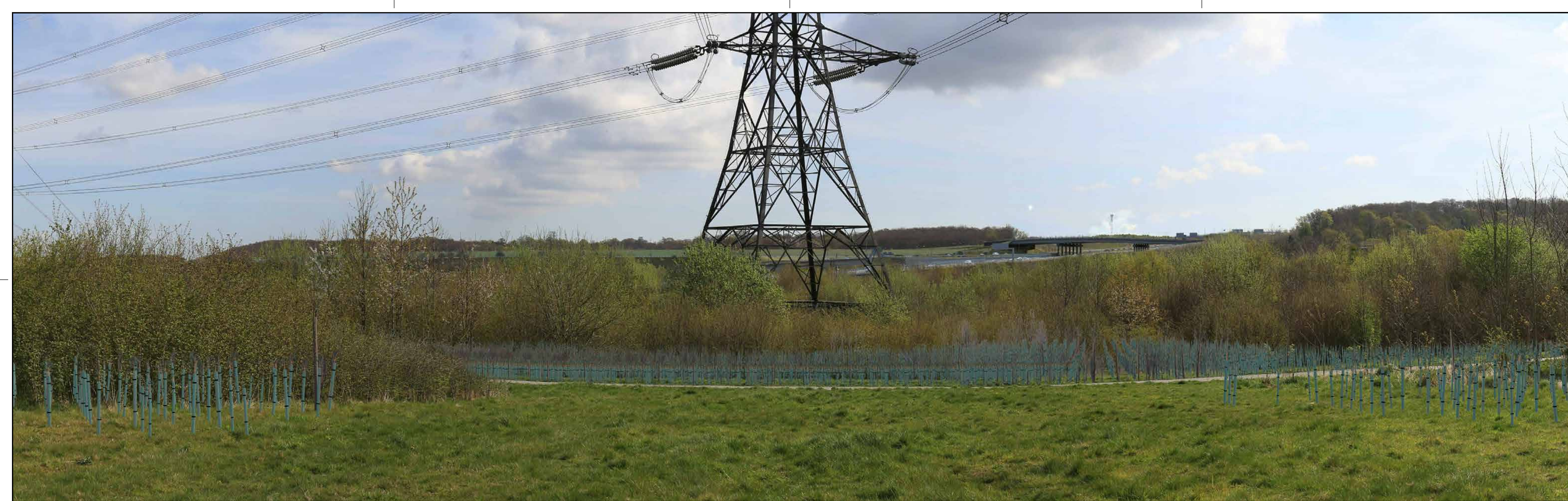


Client
LOWER THAMES CROSSING
 5th Floor Beaufort House
 15 St Botolph Street
 London EC3A 7DT

Project
 LOWER THAMES CROSSING

Drawing title
 Figure 7.19
 Baseline Photography - Viewpoint S-20a
 Winter Year 1
 Sheet 1 of 2

Drawn	BB	Date - 05/08/2022	Status	Revision
Checked	HP	Date - 05/08/2022	S8	P01
Approved	SK	Date - 05/08/2022	Application Document No. TR010032/APP/6.2	
Drawing number HE540039-CJV-ELS-SZP_ZZ000000_Z-DR-LV-00303A				



P01	S8	05/08/2022	First Issued	BB	HP	SK
Rev	Status	Rev. Date	Purpose of revision	Drawn	Chck'd	Apprv'd

For location see Figure 7.16 - Visual Effects Drawing with Representative Viewpoint and Photomontage Locations

Camera: Canon EOS 6D MkII
 Lens: Canon EF 50mm f/1.8 STM
 Equipment: Manfrotto MA 454 Micro Positioning Plate
 Manfrotto SBH-100 Ball Head

Winter Viewpoint:
 Date and Time: S-20a
 14/04/2022 09:53

Visualisation Type: Type 3
 Projection Type: Cylindrical
 Enlargement Factor: 1.5
 Horizontal FOV: 56.5°

FL, Max Aperture: 50mm, 1.75
 Tripod Height: 1.5m
 Viewpoint Ground Height: 85.3m AOD
 Viewpoint Grid Reference: 566264E, 169859N

Distance to Order Limits: 0m
 View Direction (Centre of View): NE
 GPS Accuracy: 5m



LOWER THAMES CROSSING
 5th Floor Beaufort House
 15 St Botolph Street
 London EC3A 7DT

Project: LOWER THAMES CROSSING
 Drawing title: Figure 7.19
 Photomontage - Viewpoint S-20a
 Winter Year 1
 Sheet 1 of 2

Drawn	BB	Date - 05/08/2022	Status	Revision
Checked	HP	Date - 05/08/2022	S8	P01
Approved	SK	Date - 05/08/2022	Application Document No. TR010032/APP/6.2	
Drawing number HE540039-CJV-ELS-SZP_ZZ000000_Z-DR-LV-00303				



P01	S8	05/08/2022	First Issued	BB	HP	SK
Rev	Status	Rev. Date	Purpose of revision	Drawn	Chck'd	Apprv'd

For location see Figure 7.16 - Visual Effects Drawing with Representative Viewpoint and Photomontage Locations

Camera: Canon EOS 6D MkII
 Lens: Canon EF 50mm f/1.8 STM
 Equipment: Manfrotto MA 454 Micro Positioning Plate
 Manfrotto SBH-100 Ball Head

Summer Viewpoint:
 Date and Time: S-20a
 13/06/2022 08:31

Visualisation Type: Type 3
 Projection Type: Cylindrical
 Enlargement Factor: 1.5
 Horizontal FOV: 56.5°

FL, Max Aperture: 50mm, 1.75
 Tripod Height: 1.5m
 Viewpoint Ground Height: 85.3m AOD
 Viewpoint Grid Reference: 566264E, 169859N

Distance to Order Limits: 0m
 View Direction (Centre of View): NE
 GPS Accuracy: 5m



LOWER THAMES CROSSING
 5th Floor Beaufort House
 15 St Botolph Street
 London EC3A 7DT

Project: LOWER THAMES CROSSING
 Drawing title: Figure 7.19
 Baseline Photography - Viewpoint S-20a
 Summer Year 15
 Sheet 2 of 2

Drawn	BB	Date - 05/08/2022	Status	Revision
Checked	HP	Date - 05/08/2022	S8	P01
Approved	SK	Date - 05/08/2022	Application Document No. TR010032/APP/6.2	
Drawing number HE540039-CJV-ELS-SZP_ZZ000000_Z-DR-LV-00304A				



Rev	Status	Rev. Date	Purpose of revision	Drawn	Chck'd	Apprv'd
P01	S8	05/08/2022	First Issued	BB	HP	SK

For location see Figure 7.16 - Visual Effects Drawing with Representative Viewpoint and Photomontage Locations		Summer Viewpoint:	S-20a				
		Date and Time:	13/06/2022 08:31				
Camera:	Canon EOS 6D MkII	Visualisation Type:	Type 3	FL, Max Aperture:	50mm, 1.75	Distance to Order Limits:	0m
Lens:	Canon EF 50mm f/1.8 STM	Projection Type:	Cylindrical	Tripod Height:	1.5m	View Direction	(Centre of View): NE
Equipment:	Manfrotto MA 454 Micro Positioning Plate	Enlargement Factor:	1.5	Viewpoint Ground Height:	85.3m AOD	GPS Accuracy:	5m
	Manfrotto SBH-100 Ball Head	Horizontal FOV:	56.5°	Viewpoint Grid Reference:	566264E, 169859N		

Client



LOWER THAMES CROSSING
 5th Floor Beaufort House
 15 St Botolph Street
 London EC3A 7DT

Project	LOWER THAMES CROSSING
Drawing title	Figure 7.19 Photomontage - Viewpoint S-20a Summer Year 15 Sheet 2 of 2

Drawn	BB	Date - 05/08/2022	Status	S8	Revision	P01
Checked	HP	Date - 05/08/2022				
Approved	SK	Date - 05/08/2022	Application Document No. TR010032/APP/6.2			
Drawing number		HE540039-CJV-ELS-SZP_ZZ000000_Z-DR-LV-00304				



P01	S8	05/08/2022	First Issued	BB	HP	SK
Rev	Status	Rev. Date	Purpose of revision	Drawn	Chck'd	Apprv'd

For location see Figure 7.16 - Visual Effects Drawing with Representative Viewpoint and Photomontage Locations

Camera: Canon EOS 6D MkII
 Lens: Canon EF 50mm f/1.8 STM
 Equipment: Manfrotto MA 454 Micro Positioning Plate
 Manfrotto SBH-100 Ball Head

Winter Viewpoint:
 Date and Time: S-22
 07/03/2019 13:30

Visualisation Type: Type 3
 Projection Type: Cylindrical
 Enlargement Factor: 1.5
 Horizontal FOV: 56.5°

FL, Max Aperture: 50mm, 1.75
 Tripod Height: 1.65m
 Viewpoint Ground Height: 82.4m AOD
 Viewpoint Grid Reference: 565953E, 170432N

Distance to Order Limits: 0m
 View Direction (Centre of View): ESE
 GPS Accuracy: 5m



LOWER THAMES CROSSING
 5th Floor Beaufort House
 15 St Botolph Street
 London EC3A 7DT

Project: LOWER THAMES CROSSING
 Drawing title: Figure 7.19
 Baseline Photography - Viewpoint S-22
 Winter Year 1
 Sheet 1 of 2

Drawn	BB	Date - 05/08/2022	Status	Revision
Checked	HP	Date - 05/08/2022	S8	P01
Approved	SK	Date - 05/08/2022	Application Document No. TR010032/APP/6.2	
Drawing number HE540039-CJV-ELS-SZP_ZZ000000_Z-DR-LV-00305A				



P01	S8	05/08/2022	First Issued	BB	HP	SK
Rev	Status	Rev. Date	Purpose of revision	Drawn	Chck'd	Apprv'd

For location see Figure 7.16 - Visual Effects Drawing with Representative Viewpoint and Photomontage Locations		Winter Viewpoint: Date and Time:	S-22 07/03/2019 13:30	Visualisation Type: Projection Type: Enlargement Factor: Horizontal FOV:	Type 3 Cylindrical 1.5 56.5°	FL, Max Aperture: Tripod Height: Viewpoint Ground Height: Viewpoint Grid Reference:	50mm, 1.75 1.65m 82.4m AOD 565953E, 170432N	Distance to Order Limits: View Direction (Centre of View): GPS Accuracy:	0m ESE 5m
Camera:	Canon EOS 6D MkII	Lens:	Canon EF 50mm f/1.8 STM	Equipment:	Manfrotto MA 454 Micro Positioning Plate Manfrotto SBH-100 Ball Head				

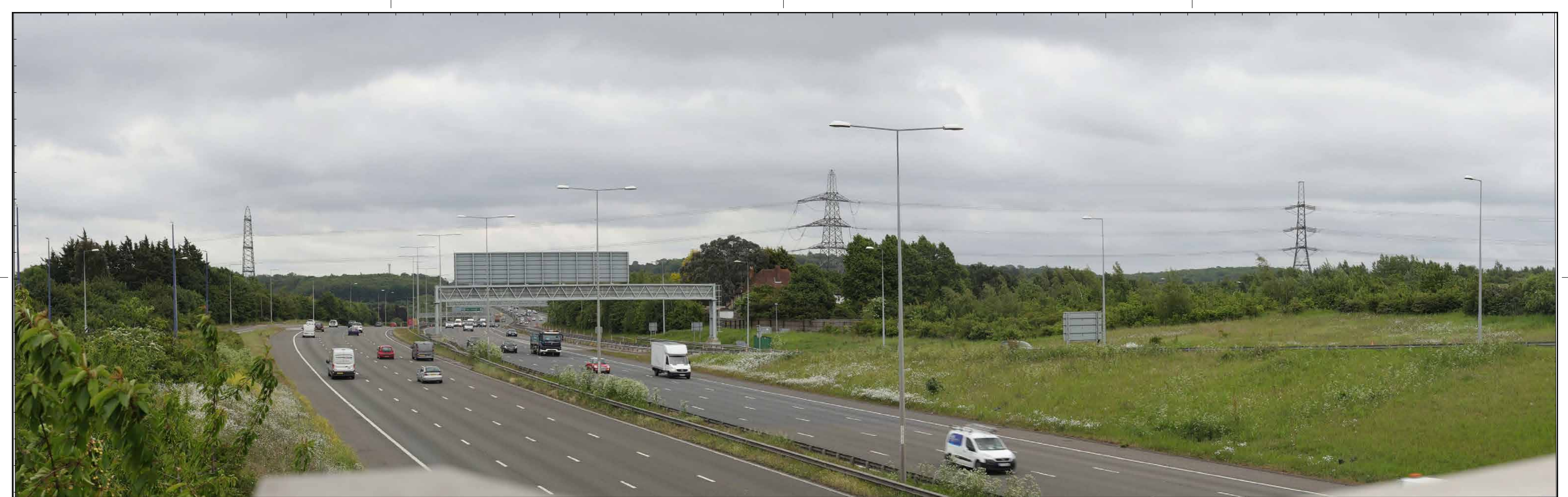
Client



LOWER THAMES CROSSING
5th Floor Beaufort House
15 St Botolph Street
London EC3A 7DT

Project	LOWER THAMES CROSSING
Drawing title	Figure 7.19 Photomontage - Viewpoint S-22 Winter Year 1 Sheet 1 of 2

Drawn	BB	Date	- 05/08/2022	Status	S8	Revision	P01
Checked	HP	Date	- 05/08/2022	Application Document No. TR010032/APP/6.2			
Approved	SK	Date	- 05/08/2022	Drawing number HE540039-CJV-ELS-SZP_ZZ000000_Z-DR-LV-00305			



For location see Figure 7.16 - Visual Effects Drawing with Representative Viewpoint and Photomontage Locations

Summer Viewpoint: S-22
Date and Time: 29/05/2019 15:33

Camera: Canon EOS 6D MkII
Lens: Canon EF 50mm f/1.8 STM
Equipment: Manfrotto MA 454 Micro Positioning Plate
Manfrotto SBH-100 Ball Head

Visualisation Type: Type 3
Projection Type: Cylindrical
Enlargement Factor: 1.5
Horizontal FOV: 56.5°

FL, Max Aperture: 50mm, 1.75
Tripod Height: 1.65m
Viewpoint Ground Height: 82.4m AOD
Viewpoint Grid Reference: 565953E, 170432N

Distance to Order Limits: 0m
View Direction (Centre of View): ESE
GPS Accuracy: 5m

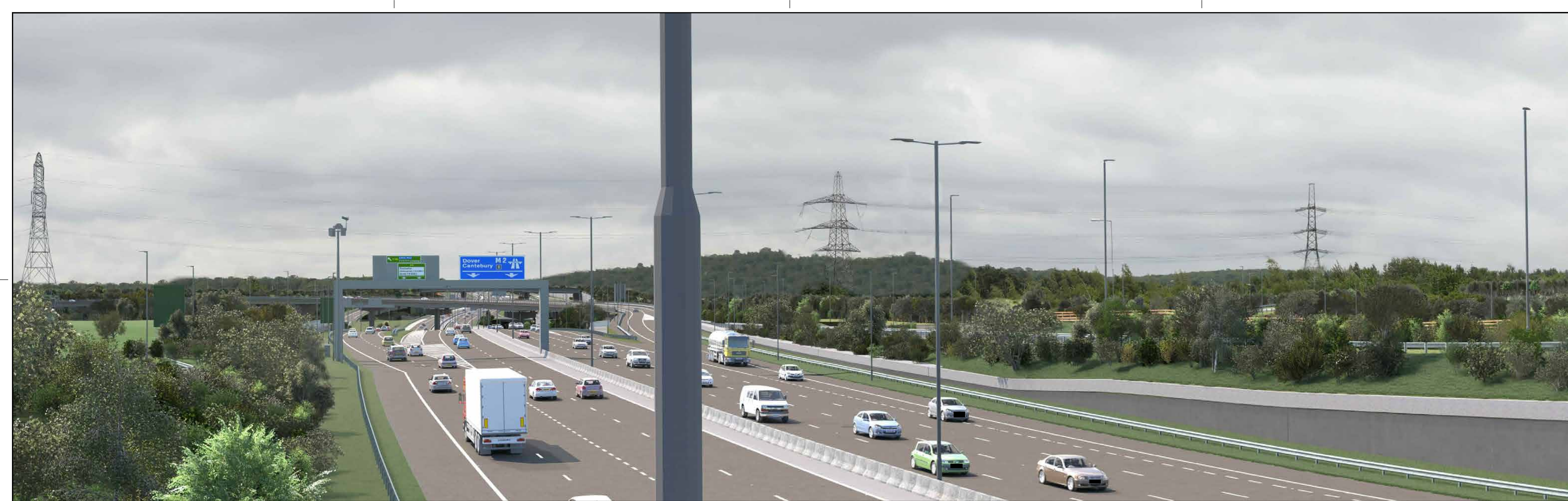


LOWER THAMES CROSSING
5th Floor Beaufort House
15 St Botolph Street
London EC3A 7DT

Project: LOWER THAMES CROSSING
Drawing title: Figure 7.19
Baseline Photography - Viewpoint S-22
Summer Year 15
Sheet 2 of 2

Drawn	BB	Date - 05/08/2022	Status	Revision
Checked	HP	Date - 05/08/2022	S8	P01
Approved	SK	Date - 05/08/2022	Application Document No. TR010032/APP/6.2	
Drawing number HE540039-CJV-ELS-SZP_ZZ000000_Z-DR-LV-00306A				

P01	S8	05/08/2022	First Issued	BB	HP	SK
Rev	Status	Rev. Date	Purpose of revision	Drawn	Chck'd	Apprv'd



Rev	Status	Rev. Date	Purpose of revision	Drawn	Chck'd	Apprv'd
P01	S8	05/08/2022	First Issued	BB	HP	SK

For location see Figure 7.16 - Visual Effects Drawing with Representative Viewpoint and Photomontage Locations		Summer Viewpoint:	S-22				
		Date and Time:	29/05/2019 15:33				
Camera:	Canon EOS 6D MkII	Visualisation Type:	Type 3	FL, Max Aperture:	50mm, 1.75	Distance to Order Limits:	0m
Lens:	Canon EF 50mm f/1.8 STM	Projection Type:	Cylindrical	Tripod Height:	1.65m	View Direction	ESE
Equipment:	Manfrotto MA 454 Micro Positioning Plate	Enlargement Factor:	1.5	Viewpoint Ground Height:	82.4m AOD	(Centre of View):	ESE
	Manfrotto SBH-100 Ball Head	Horizontal FOV:	56.5°	Viewpoint Grid Reference:	565953E, 170432N	GPS Accuracy:	5m

Client



LOWER THAMES CROSSING
 5th Floor Beaufort House
 15 St Botolph Street
 London EC3A 7DT

Project	LOWER THAMES CROSSING
Drawing title	Figure 7.19 Photomontage - Viewpoint S-22 Summer Year 15 Sheet 2 of 2

Drawn	BB	Date - 05/08/2022	Status	Revision
Checked	HP	Date - 05/08/2022	S8	P01
Approved	SK	Date - 05/08/2022	Application Document No. TR010032/APP/6.2	
Drawing number		HE540039-CJV-ELS-SZP_ZZ000000_Z-DR-LV-00306		

If you need help accessing this or any other National Highways information, please call **0300 123 5000** and we will help you.

© Crown copyright 2023.

You may re-use this information (not including logos) free of charge in any format or medium, under the terms of the Open Government Licence. To view this licence:

visit www.nationalarchives.gov.uk/doc/open-government-licence/

write to the **Information Policy Team, The National Archives, Kew, London TW9 4DU**, or email psi@nationalarchives.gsi.gov.uk.

Mapping (where present): © Crown copyright and database rights 2023 OS 100030649. You are permitted to use this data solely to enable you to respond to, or interact with, the organisation that provided you with the data. You are not permitted to copy, sub-licence, distribute or sell any of this data to third parties in any form.

If you have any enquiries about this publication email info@nationalhighways.co.uk or call **0300 123 5000***.

*Calls to 03 numbers cost no more than a national rate call to an 01 or 02 number and must count towards any inclusive minutes in the same way as 01 and 02 calls.

These rules apply to calls from any type of line including mobile, BT, other fixed line or payphone. Calls may be recorded or monitored.

Printed on paper from well-managed forests and other controlled sources when issued directly by National Highways.

Registered office Bridge House, 1 Walnut Tree Close, Guildford GU1 4LZ

National Highways Limited registered in England and Wales number 09346363